

CITY OF GENEVA, ILLINOIS



PLANS FOR THE CONSTRUCTION OF THE GENEVA WATER TREATMENT PLANT

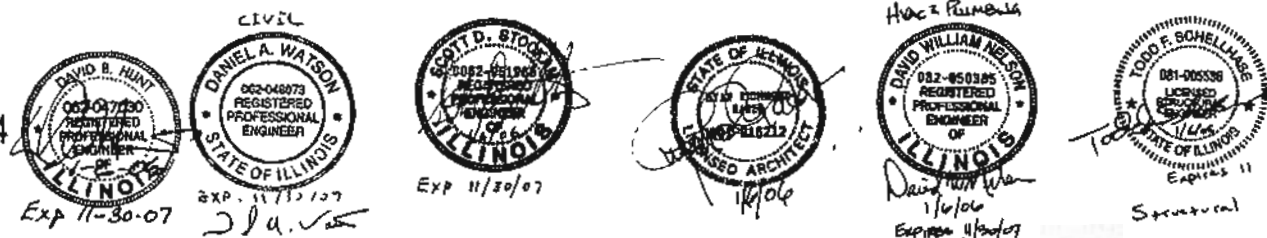
PREPARED BY



In Association With



B&V PROJECT NO. 137804
JANUARY 2006



GENERAL LEGEND

| | |
|--|---|
| | SURFACED STREET, ROAD OR DRIVE |
| | SURFACED STREET, ROAD OR DRIVE WITH CURBS |
| | NON-SURFACED STREET, ROAD OR DRIVE |
| | CONCRETE WALK |
| | CATCH BASIN |
| | MANHOLE |
| | DRAINAGE COURSE OR FLOW LINE |
| | EXISTING GROUND CONTOUR |
| | FINISH GRADE CONTOUR |
| | BANK OR SLOPE LINES |
| | TEST HOLE AND NUMBER |
| | SURVEY LINE WITH PI, PT, OR POT |
| | CONCRETE ENCASUREMENT-PLAN |
| | CONCRETE REACTION BLOCKING AT BEND, PLUG OR TEE |
| | DRAINS OR CULVERTS |
| | TUNNEL CASING - PLAN |
| | SMALLER THAN 24" |
| | 24" AND LARGER |
| | EXISTING GENERAL LAYOUT YARD PIPING |
| | NEW GENERAL LAYOUT YARD PIPING |
| | WATER LINE OR SEWER IN PROFILE |
| | NON-CONNECTING PIPING |
| | CONSTRUCTION EASEMENT LINE |
| | EASEMENT LINE |
| | RIGHT-OF-WAY LINE |
| | PROPERTY LINE |
| | PERMANENT EASEMENT LINE |
| | TEMPORARY EASEMENT LINE |
| | UTILITY EASEMENT LINE |
| | SURVEY LINE SECTION LINE |
| | WATER LINE |
| | GAS LINE |
| | TELEPHONE (UNDERGROUND) |
| | ELECTRICAL (UNDERGROUND) |
| | POWER OR TELEPHONE LINES (OVERHEAD) |
| | WATER OR GAS VALVE |
| | WATER OR GAS METER |
| | TELEPHONE OR POWER POLE WITH GUY ANCHOR |
| | FIRE HYDRANT |
| | YARD HYDRANT |
| | STREET LIGHT POLE |
| | TRAFFIC SIGNAL |
| | TRAFFIC SIGN |
| | STOP SIGN |
| | HEDGE, BRUSH, SHRUBS, WOODS |
| | DECIDUOUS TREE AND TRUNK DIAMETER |
| | CONIFEROUS TREE AND TRUNK DIAMETER |
| | SWAMP |

| | |
|--|---|
| | BUILDINGS, STRUCTURES |
| | STRUCTURES UNDERGROUND |
| | FUTURE BUILDINGS, STRUCTURES |
| | CLOTHES LINE |
| | SWING SET |
| | FENCE |
| | FENCE, WOOD |
| | RAILROAD, EACH TRACK |
| | CENTERLINE |
| | SECTION NUMBER OR DETAIL LETTER |
| | DRAWING NUMBER OR DETAIL ADDRESS OR WHERE SECTION IS CUT OR DETAIL IS NOTED |
| | DOOR, WINDOW AND LOUVER SCHEDULE REFERENCE |
| | WALL ELEVATION |
| | ABBREVIATION |
| | SCHEDULE NUMBER |
| | ROOM NUMBER |
| | AREA DESIGNATION |
| | EQUIPMENT OR VALVE IDENTIFICATION CODE |
| | EQUIPMENT NUMBER |
| | EQUIPMENT OR VALVE IDENTIFICATION CODE |
| | EQUIPMENT NUMBER |
| | EQUIPMENT REPRESENTATION WITH CALLOUT |
| | EXISTING FACILITY TO BE DEMOLISHED OR REMOVED |
| | ELEVATION CALLOUT |

| | |
|--|--|
| | EARTH OR GRADE |
| | GRANULAR FILL (CRUSHED ROCK OR GRAVEL) |
| | ROCK |
| | NEW CONCRETE |
| | EXISTING CONCRETE, PRECAST OR PRESTRESSED CONCRETE |
| | BRICK, FACE |
| | BRICK, COMMON |
| | CONCRETE MASONRY UNITS (CMU) |
| | CUT STONE OR SAND FILL, GROUT, MORTAR, AND PLASTER |
| | WOOD, SHEATHING, PANELING, DECKING, ETC. |
| | WOOD, STUDS, BEAMS, JOISTS, ETC. |
| | RIPRAP |
| | CHECKERED PLATE |
| | STEEL (FOR 1/2" SCALE & LARGER) |
| | STEEL OR ALUMINUM (FOR 3/4" SCALE & SMALLER) |
| | BAR GRATING (LINES IN DIRECTION OF SPAN) |
| | ALUMINUM |
| | INSULATION (BATT) |
| | INSULATION (R1070) |

MATERIALS LEGEND

| | |
|--|--|
| | EARTH OR GRADE |
| | GRANULAR FILL (CRUSHED ROCK OR GRAVEL) |
| | ROCK |
| | NEW CONCRETE |
| | EXISTING CONCRETE, PRECAST OR PRESTRESSED CONCRETE |
| | BRICK, FACE |
| | BRICK, COMMON |
| | CONCRETE MASONRY UNITS (CMU) |
| | CUT STONE OR SAND FILL, GROUT, MORTAR, AND PLASTER |
| | WOOD, SHEATHING, PANELING, DECKING, ETC. |
| | WOOD, STUDS, BEAMS, JOISTS, ETC. |
| | RIPRAP |
| | CHECKERED PLATE |
| | STEEL (FOR 1/2" SCALE & LARGER) |
| | STEEL OR ALUMINUM (FOR 3/4" SCALE & SMALLER) |
| | BAR GRATING (LINES IN DIRECTION OF SPAN) |
| | ALUMINUM |
| | INSULATION (BATT) |
| | INSULATION (R1070) |

| | |
|--|--------------------|
| | NEW PIPING |
| | UNDERGROUND PIPING |
| | EXISTING PIPING |
| | FUTURE PIPING |
| | AIR (COMPRESSED) |

| | |
|--|---------------------------|
| | BLIND FLANGE |
| | CAP OR PLUG |
| | CLEANOUT |
| | CROSS |
| | DIAPHRAGM SEAL |
| | ELBOW |
| | ELBOW DOWN |
| | ELBOW TURNING UP |
| | HOSE CONNECTION |
| | QUICK COUPLING |
| | REDUCER |
| | RUPTURE DISK |
| | TEE |
| | TEE LINE DOWN |
| | TEE LINE UP |
| | WYE |
| | WYE STRAINER |
| | WYE STRAINER WITH BLOWOFF |
| | DRAIN OR BELL-UP |

| | |
|--|---------------------------|
| | PINCH VALVE |
| | PLUG VALVE, ECCENTRIC |
| | PLUG VALVE, NON ECCENTRIC |
| | BUTTERFLY VALVE |
| | GATE VALVE |
| | BALL VALVE |
| | GLOBE VALVE |
| | CHECK VALVE |
| | 3 WAY VALVE |
| | 4 WAY VALVE |

PIPING SYSTEMS

| | | | | | |
|--|---------------------------|--|---------------------|--|------------------------|
| | AIR, COMPRESSED | | FILTER-TO-WASTE | | SODIUM HYPOCHLORITE |
| | AIR WASH SUPPLY | | FINISHED WATER | | SODIUM HYDROXIDE |
| | ANTISCALANT | | FLUORIDE | | STORM SEWER |
| | CAUSTIC DETERGENT | | NATURAL GAS | | SULFURIC ACID |
| | CIP DRAIN | | PERMEATE | | SUMP PUMP DISCHARGE |
| | CIP SOLUTION (TO/FROM RD) | | POLYMER SOLUTION | | VENT |
| | CITRIC ACID | | REJECT | | WASHWATER |
| | COMBINED EFFLUENT | | RD BYPASS | | WASHWATER RETURN |
| | CORROSION INHIBITOR | | RD FEED | | W1 (POTABLE WATER) |
| | DEEP WELL SUPPLY | | RD FLUSH | | W2 (NON-POTABLE WATER) |
| | DISTRIBUTION | | SANITARY SEWER | | |
| | DRAIN/OVERFLOW | | SHALLOW WELL SUPPLY | | |
| | FILTER EFFLUENT | | SODIUM BISULFITE | | |

PIPING ACCESSORIES LEGEND

| | |
|--|----------------------------|
| | CALIBRATING COLUMN |
| | TRAP |
| | UNION |
| | WALL SLEEVE |
| | AUTOMATIC DRAIN TRAP |
| | DRIP TRAP |
| | DUPLEX STRAINER |
| | EXPANSION COMPENSATOR |
| | INLINE FILTER |
| | FLEXIBLE HOSE OR TUBING |
| | FLEXIBLE CONNECTOR |
| | HOSE REEL |
| | INJECTOR, EJECTOR, BLENDER |
| | ORIFICE PLATE |
| | PIPE GUIDE |
| | SEDIMENT TRAP |
| | STRAINER |
| | SUCTION DIFFUSER |
| | PIPE DIFFUSER |

VALVE LEGEND

| | |
|--|--|
| | ANGLE VALVE |
| | CHLORINE INSTITUTE VALVE |
| | DIAPHRAGM VALVE |
| | THROTTLING VALVE |
| | FLAME ARRESTER OR CHECK |
| | BACKWATER VALVE |
| | INLINE PRESSURE RELIEF VALVE |
| | PRESSURE REGULATING VALVE |
| | PRESSURE SUSTAINING OR MAINTAINING VALVE |
| | VACUUM BREAKER |

| | |
|--|------------------------------|
| | THERMAL SHUTOFF VALVE |
| | EXPLOSION RELIEF VALVE |
| | HOSE FAUCET |
| | HOSE FAUCET W/VACUUM BREAKER |
| | HOSE VALVE W/HOSE NIPPLE |
| | BACKFLOW PREVENTER |
| | SAFETY RELIEF VALVE |
| | VACUUM RELIEF CHECK VALVE |
| | PRESSURE VACUUM RELIEF VALVE |

MISCELLANEOUS EQUIPMENT

| | |
|--|----------------------|
| | STATIC MIXER |
| | VERTICAL MIXER |
| | SIGHT GLASS |
| | COMPRESSOR OR BLOWER |
| | PIPE ANCHOR |
| | PUMP |
| | EXPANSION TANK |

ACTUATOR LEGEND

| | |
|--|----------------|
| | ELECTRIC |
| | FLOAT |
| | DIAPHRAGM |
| | AIR/OIL TANDEM |
| | SOLENOID |
| | AIR |

NOTE: SYMBOLS ON THIS SHEET WHICH ARE TO BE SHOWN AS EXISTING SHALL BE DELINEATED AS SCREENED THOSE SYMBOLS WHICH ARE TO BE SHOWN AS NEW SHALL BE DELINEATED AS SOLID (HEAVY)

| | |
|------|-------------------------------|
| DATE | REVISIONS AND RECORD OF ISSUE |
| BY | NO. |
| DATE | NO. |
| DATE | NO. |
| DATE | NO. |
| DATE | NO. |

BLACK & VEATCH
 Black & Veatch Corporation
 Chicago, Illinois

CITY OF GENEVA, ILLINOIS
WATER TREATMENT PLANT

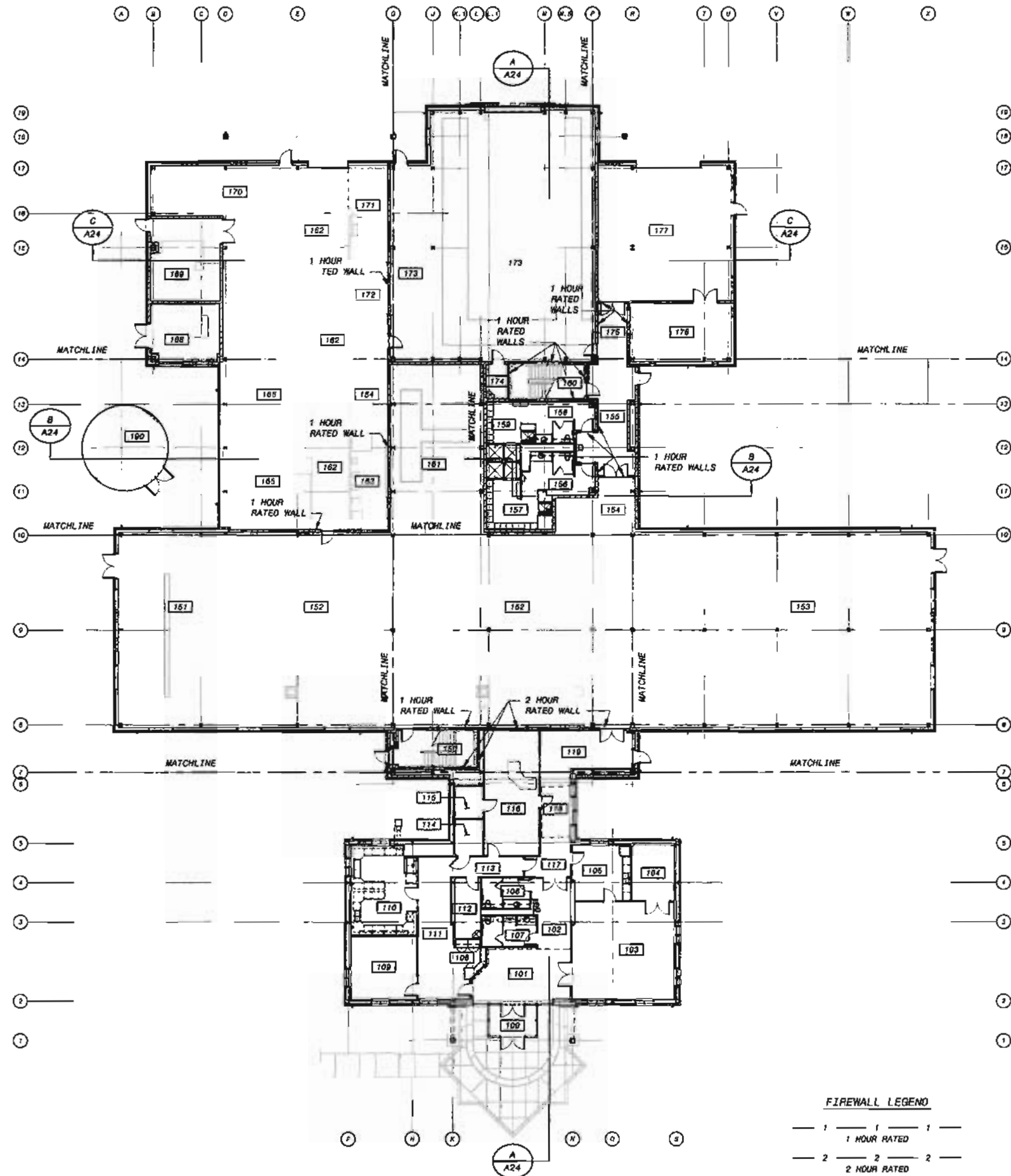
GENERAL LEGENDS & ABBREVIATIONS

DESIGNED: BGF
 DETAILED: BGF
 CHECKED: RNS
 APPROVED: BRC
 DATE: 1/03/00

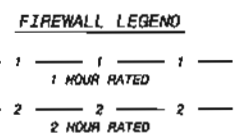
IF THIS BAR DOES NOT MEASURE 1" THEN DRAWING IS NOT TO FULL SCALE

PROJECT NO. 137804

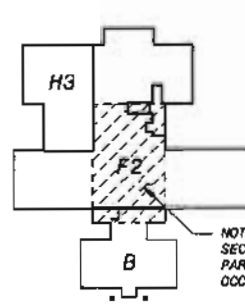
G3 SHEET 3 OF 267



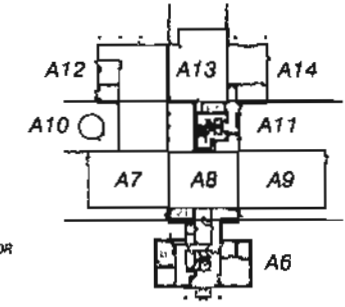
OPERATING FLOOR PLAN
1/18" = 1'-0"



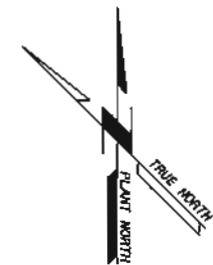
| SPACE INVENTORY | | |
|-----------------|----------------------------------|-------------------------------|
| ROOM No. | ROOM NAME | REMARKS |
| 100 | VESTIBULE | OPEN TO VAULTED WINDOW SYSTEM |
| 101 | LOBBY | OPEN TO ABOVE / VF TO 8'-0" |
| 102 | LOBBY HALLWAY | |
| 103 | TRAINING ROOM | |
| 104 | STORAGE | |
| 105 | LUNCH ROOM | |
| 106 | WOMEN | |
| 107 | MEN | |
| 108 | RECEPTION | |
| 109 | MANAGERS OFFICE | |
| 110 | LABORATORY | |
| 111 | WORK AREA | |
| 112 | JANITOR | |
| 113 | HALLWAY | |
| 114 | ELECTRICAL EQUIPMENT | |
| 116 | SERVERS | |
| 118 | CONTROL ROOM | |
| 117 | VIEWING HALLWAY | |
| 118 | VIEWING HALLWAY | VF TO 8'-0" |
| 119 | VIEWING HALLWAY | |
| 160 | STAIR NO. 1 | |
| 151 | CARTRIDGE FILTER AREA | |
| 152 | REVERSE OSMOSIS AREA | |
| 152 | REVERSE OSMOSIS AREA | |
| 153 | PRESSURE FILTERS | |
| 154 | ACCESS AISLE | |
| 156 | CORRIDOR | |
| 158 | MEN RESTROOM | |
| 157 | MEN LOCKER RDM | |
| 158 | WOMEN RESTROOM | |
| 159 | WOMEN LOCKER ROOM | |
| 160 | STAIRWAY | |
| 161 | CIP ROOM | SP IN SUMP AREA |
| 162 | CHEMICAL FEED AISLE | |
| 163 | ANTISCALANT FEED AREA | |
| 164 | CITRIC ACID FEED AREA | |
| 166 | CORROSION INHIBITOR STORAGE | |
| 168 | SODIUM HYDROXIDE STORAGE | |
| 167 | SODIUM HYPOCHLORITE STORAGE | |
| 168 | DECARBONATOR BLOWERS | |
| 168 | FLUORIDE STORAGE / FEED | |
| 170 | SULFURIC ACID STORAGE / FEED | |
| 171 | SODIUM BISULFITE STORAGE / FEED | |
| 172 | CAUSTIC DETERGENT STORAGE / FEED | |
| 173 | HIGH SERVICE PUMPS | |
| 174 | JANITOR | |
| 175 | CORRIDOR | |
| 176 | STORAGE | |
| 177 | GARAGE | |
| 190 | DECARBONATOR SILO | |



CODE PLAN
NO SCALE



KEY PLAN
NO SCALE

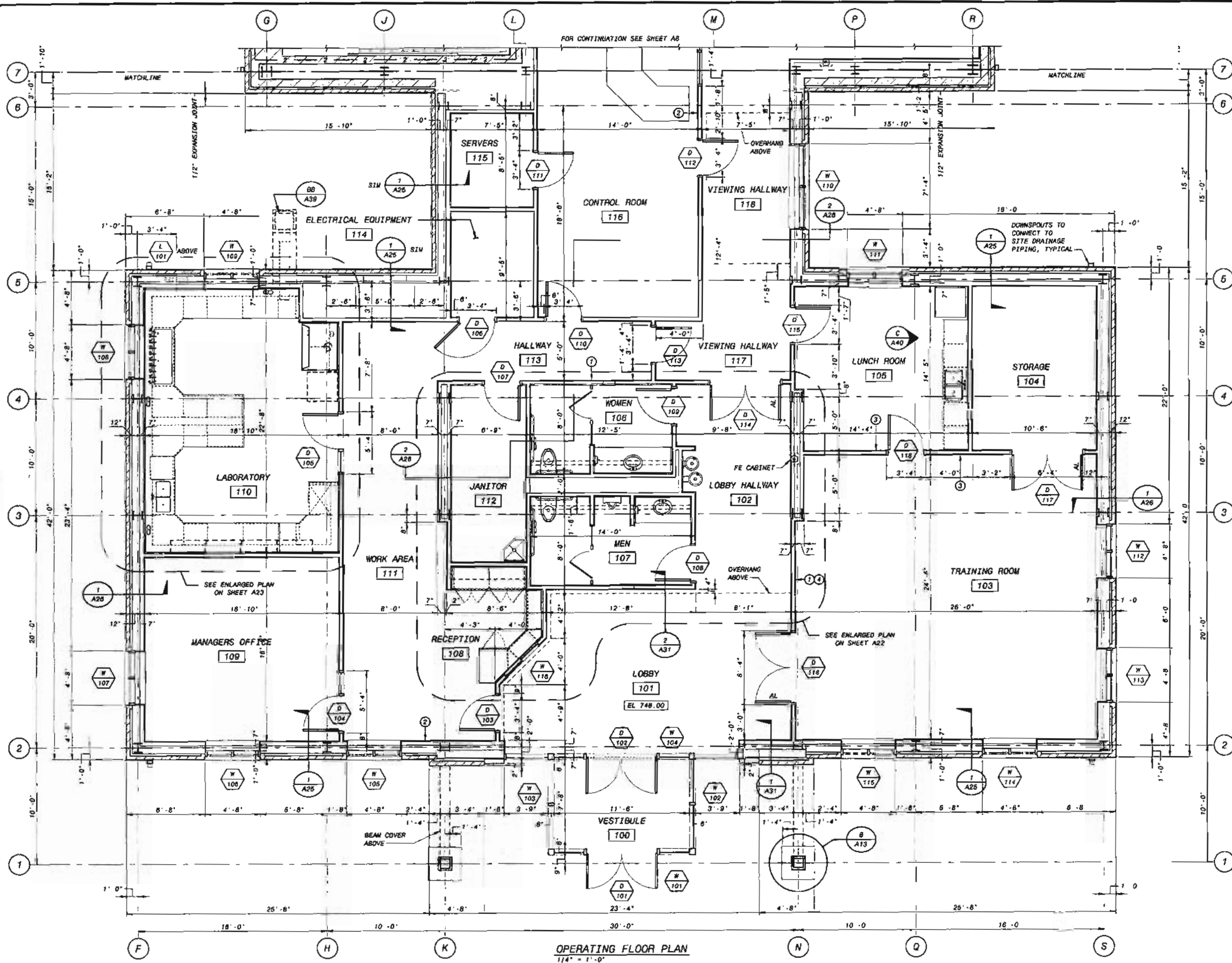


| DATE | DESCRIPTION AND RECORD OF ISSUE | BY | CR | APP |
|------------|--|----|----|-----|
| 11/15/2008 | PROJECT ADMINISTRATION - SHEET | | | |
| 11/15/2008 | PROJECT ADMINISTRATION - INTERIOR | | | |
| 11/15/2008 | PROJECT ADMINISTRATION - GENERAL SHEET | | | |
| 11/15/2008 | PROJECT ADMINISTRATION - GENERAL SHEET | | | |
| 11/15/2008 | PROJECT ADMINISTRATION - GENERAL SHEET | | | |

BLACK & VEATCH
Black & Veatch Corporation
Chicago, Illinois

CITY OF GENEVA, ILLINOIS
WATER TREATMENT PLANT
OPERATIONS BUILDING
ARCHITECTURAL
FLOOR PLAN ARRANGEMENT / CODE DATA SHEET

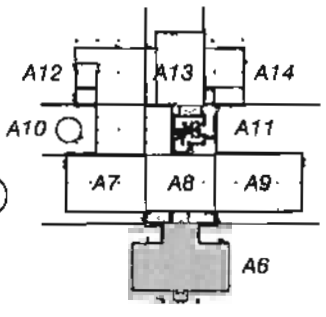
| |
|---------------------------------|
| DESIGNED: MAJ |
| DETAILED: DAY |
| CHECKED: RPP/DJT |
| APPROVED: RPP |
| DATE: 1/08/08 |
| PROJECT NO. 137804 |
| A5 SHEET 24 OF 267 |



- ① - CHALK/BULLETIN BOARD
- ② - CLOCK
- ③ - 4' x 4' BULLETIN BOARD
- ④ - PROJECTION SCREEN

FIREWALL LEGEND

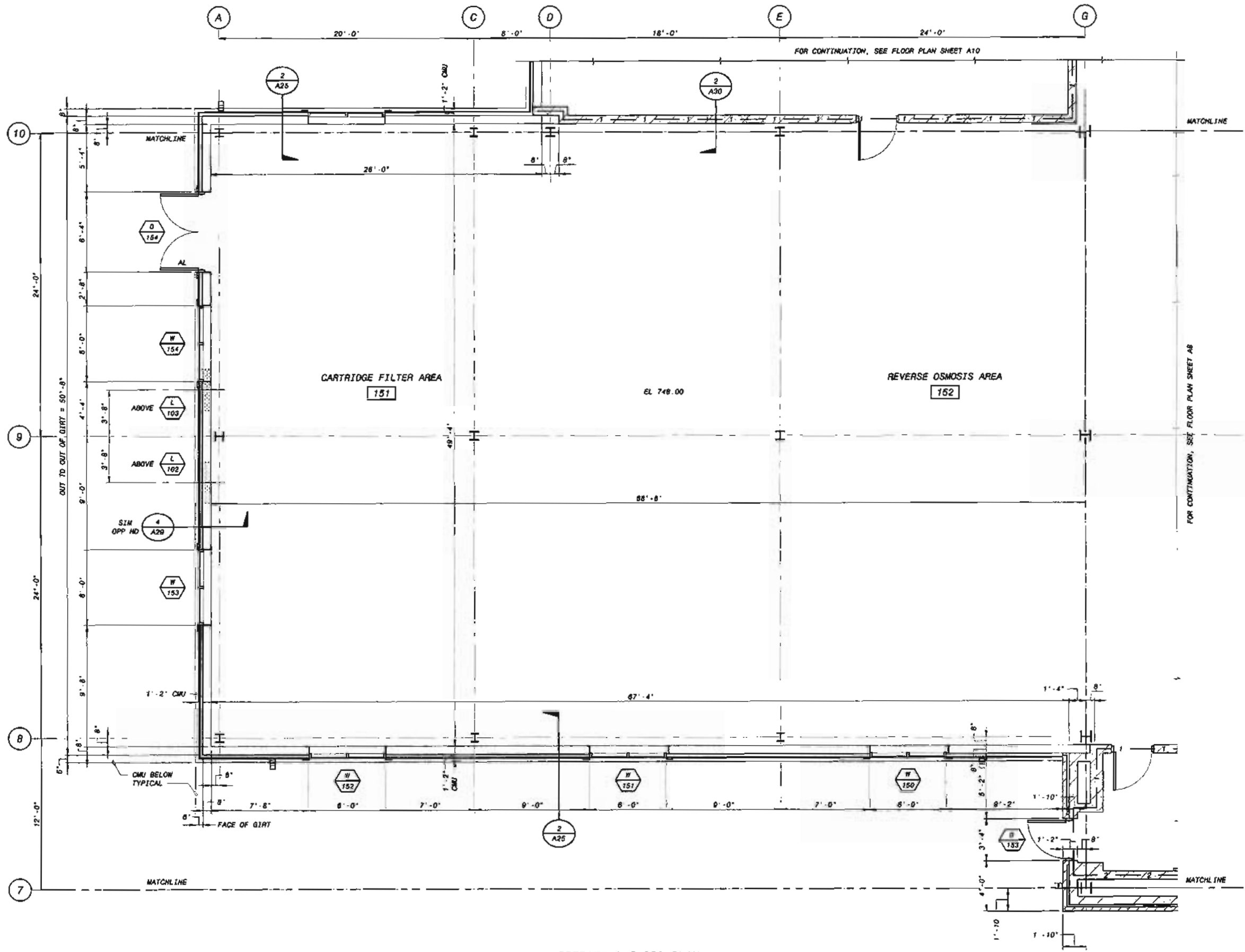
| | | |
|--------------|---|---|
| 1 | 1 | 1 |
| 1 HOUR RATED | | |
| 2 | 2 | 2 |
| 2 HOUR RATED | | |



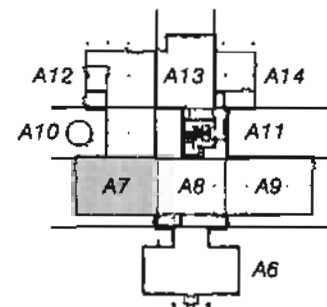
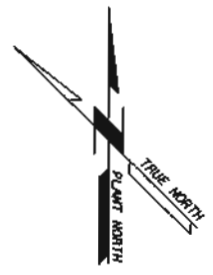
KEY PLAN
NO SCALE

OPERATING FLOOR PLAN
1/4" = 1'-0"

| | |
|---|---|
| <p>DATE: 11/17/08 CHECKED: J. J. J. (11/17/08) DESIGNED: M. J. (11/17/08) PROJECT NO. 137804</p> | <p style="text-align: center;">BLACK & VEATCH Black & Veatch Corporation Chicago, Illinois</p> <p style="text-align: center;">CITY OF GENEVA, ILLINOIS WATER TREATMENT PLANT</p> <p style="text-align: center;">OPERATIONS BUILDING ARCHITECTURAL ADMINISTRATION AREA FLOOR PLAN</p> <p>DESIGNED: M. J. CHECKED: J. J. J. APPROVED: J. J. J. DATE: 11/08/08</p> <p style="font-size: small;">IF THIS BAR DOES NOT MEASURE 1" THEN DRAWING IS NOT TO FULL SCALE</p> <p style="text-align: center;">PROJECT NO. 137804</p> <p style="text-align: center;">A6 SHEET 25 OF 267</p> |
|---|---|



OPERATING FLOOR PLAN
1/4" = 1'-0"



KEY PLAN
NO SCALE

| NO. | BY | CHK | DATE |
|-----|-----|-----|----------|
| 1 | SHL | SHL | 11/08/00 |
| 2 | SHL | SHL | 11/08/00 |
| 3 | SHL | SHL | 11/08/00 |
| 4 | SHL | SHL | 11/08/00 |
| 5 | SHL | SHL | 11/08/00 |
| 6 | SHL | SHL | 11/08/00 |
| 7 | SHL | SHL | 11/08/00 |
| 8 | SHL | SHL | 11/08/00 |
| 9 | SHL | SHL | 11/08/00 |
| 10 | SHL | SHL | 11/08/00 |

REVISED AND RECORD OF ISSUE
PROJECT NO. 137804-300-237-A-100000000
DATE 11/08/00
DRAWN BY SHL
CHECKED BY SHL
DESIGNED BY SHL
PROJECT NO. 137804-300-237-A-100000000
DATE 11/08/00
DRAWN BY SHL
CHECKED BY SHL
DESIGNED BY SHL

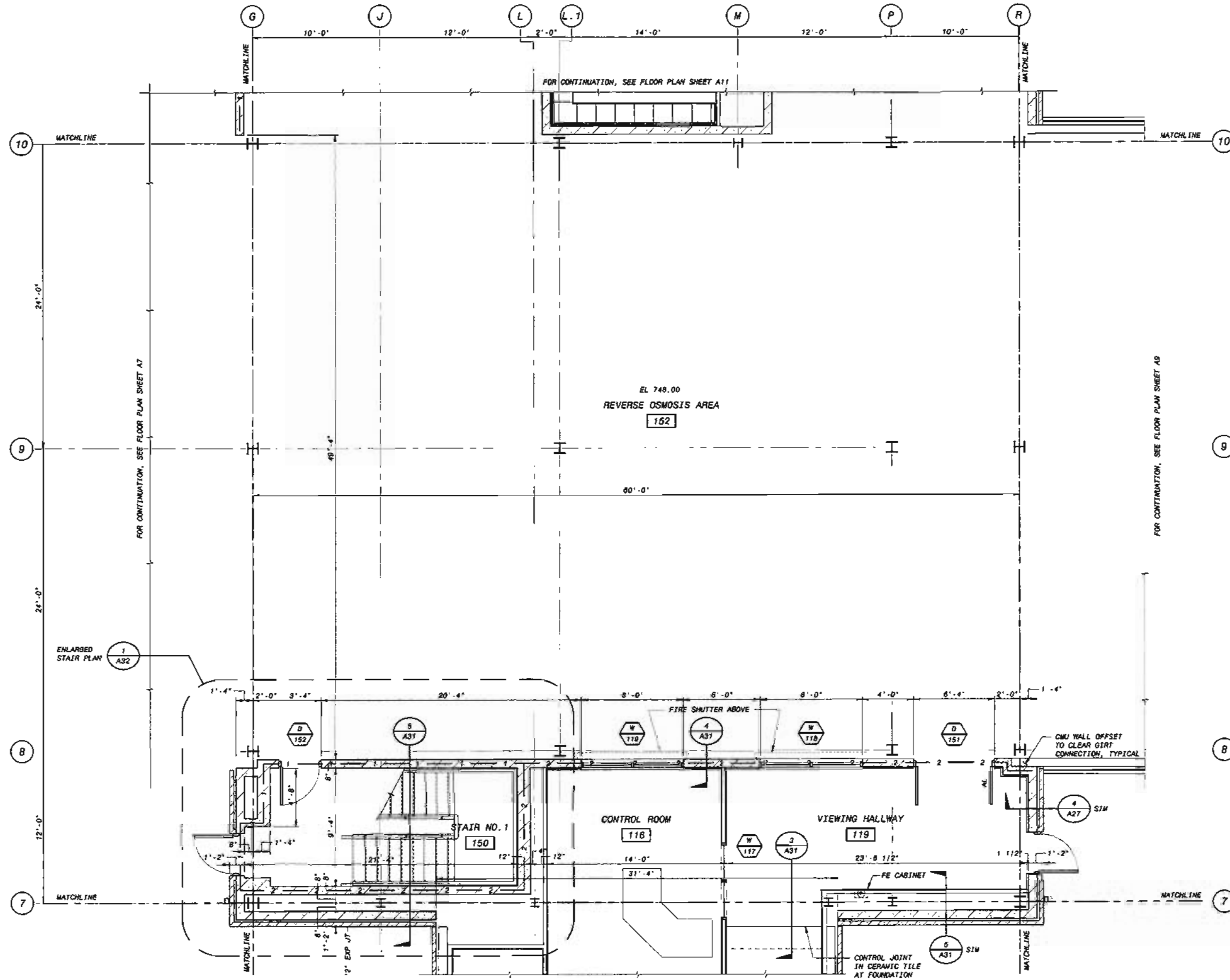
BLACK & VEATCH
Black & Veatch Corporation
Chicago, Illinois

CITY OF GENEVA, ILLINOIS
WATER TREATMENT PLANT
OPERATIONS BUILDING
ARCHITECTURAL
RO AREA FLOOR PLAN

DESIGNED: WJ
DETAILED: GAY
CHECKED: RRR/OUT
APPROVED: RRR
DATE: 1/08/00

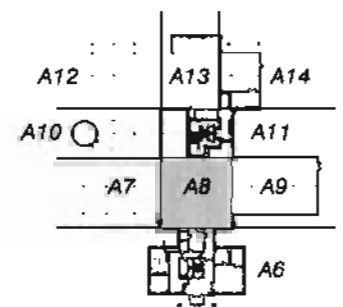
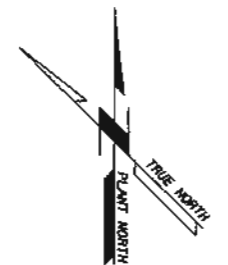
PROJECT NO.
137804

A7
SHEET
26 OF 267



FOR CONTINUATION, SEE FLOOR PLAN SHEET AS

OPERATING FLOOR PLAN
1/4" = 3'-0"

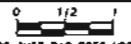


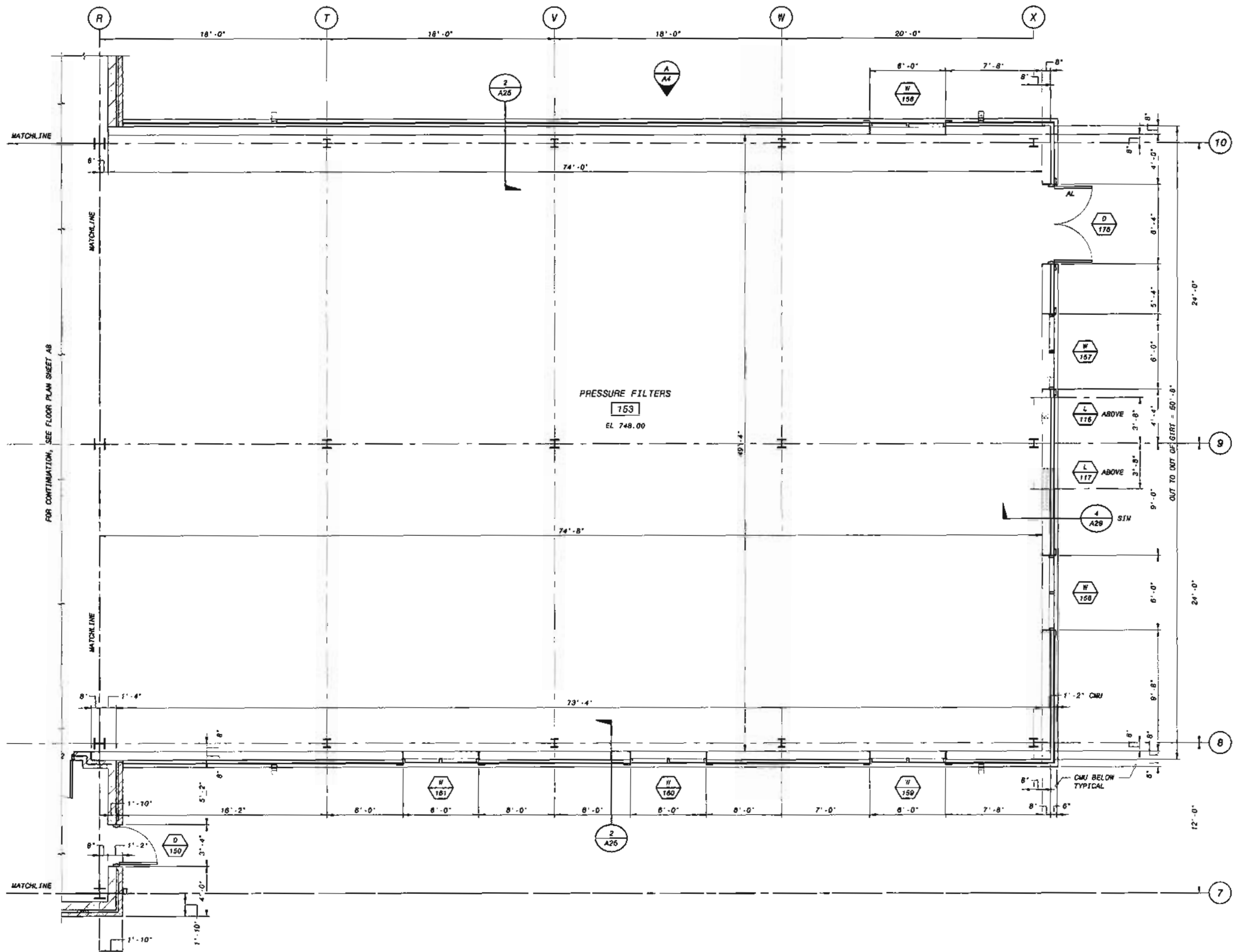
KEY PLAN
NO SCALE

| DATE | REVISIONS AND RECORD OF ISSUE | NO. | BY | CHK. |
|----------|---------------------------------------|-----|-------|-------|
| 10/28/08 | REVISED: 10/28/08 11:51 AM 3:48:15 PM | 1 | MM/DT | MM/DT |
| 11/15/08 | REVISED: 11/15/08 11:51 AM 3:48:15 PM | 2 | MM/DT | MM/DT |
| 12/15/08 | REVISED: 12/15/08 11:51 AM 3:48:15 PM | 3 | MM/DT | MM/DT |
| 01/15/09 | REVISED: 01/15/09 11:51 AM 3:48:15 PM | 4 | MM/DT | MM/DT |

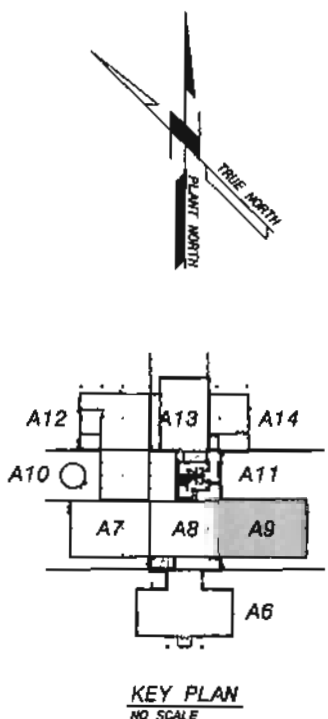
BLACK & VEATCH
Black & Veatch Corporation
Chicago, Illinois

CITY OF GENEVA, ILLINOIS
WATER TREATMENT PLANT
OPERATIONS BUILDING
ARCHITECTURAL
R01 FILTER AREA FLOOR PLAN

DESIGNED: MAJ
 DETAILED: GAY
 CHECKED: RRR/DJT
 APPROVED: RRR
 DATE: 1/08/09

 IF THIS BAR DOES NOT
 MEASURE 1" THEN DRAWING IS
 NOT TO FULL SCALE
 PROJECT NO.
 137804
A8
 SHEET
 27 OF 287



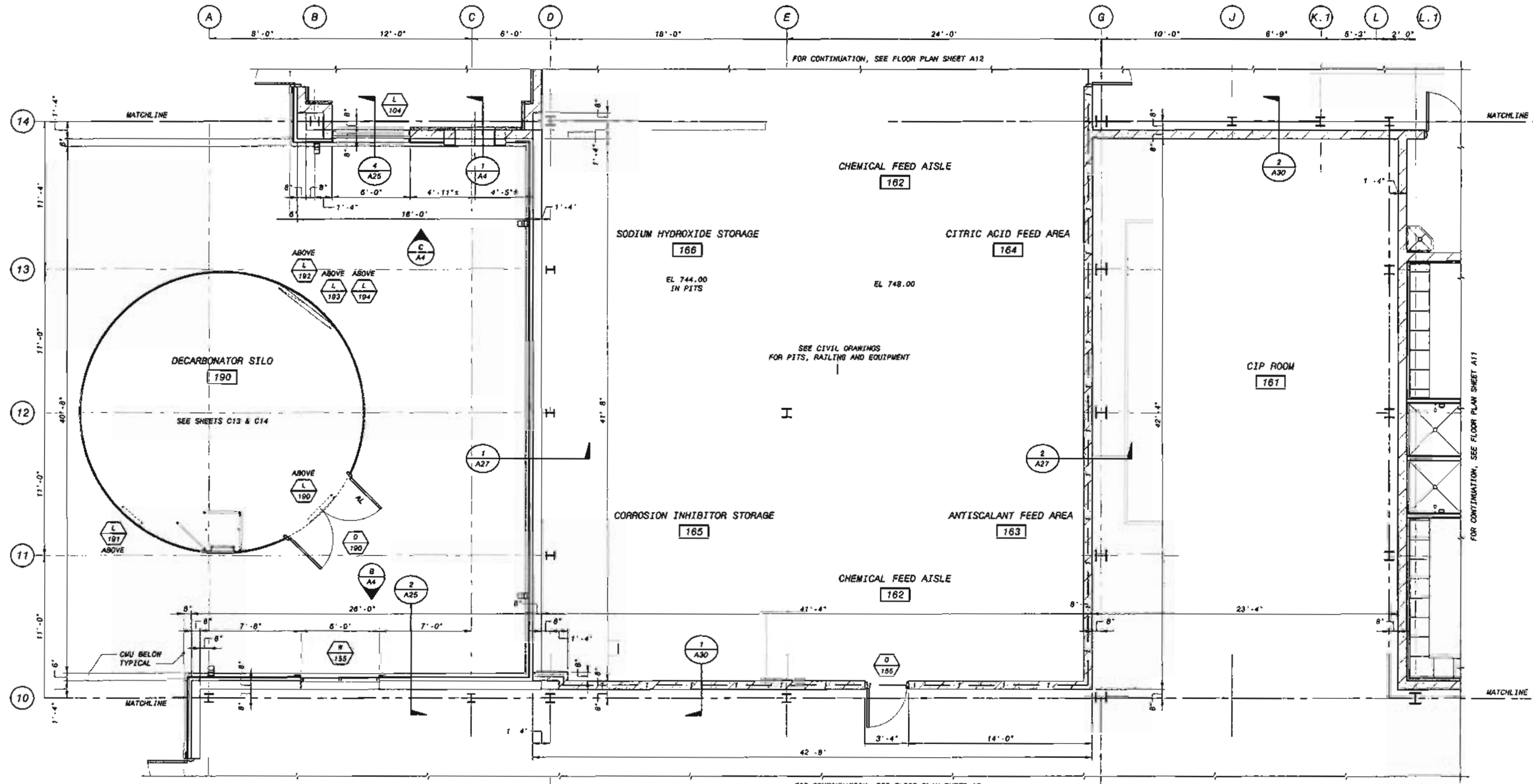
OPERATING FLOOR PLAN
1/4" = 1'-0"



KEY PLAN
NO SCALE

FOR CONTINUATION, SEE FLOOR PLAN SHEET A8

| <p>REVISIONS AND RECORD OF ISSUE</p> <table border="1"> <tr> <th>NO.</th> <th>BY</th> <th>CHK</th> <th>APP</th> </tr> <tr> <td> </td> <td> </td> <td> </td> <td> </td> </tr> </table> | | NO. | BY | CHK | APP | | | | |
|--|----|-----|-----|-----|-----|--|--|--|--|
| NO. | BY | CHK | APP | | | | | | |
| | | | | | | | | | |
| <p>PROJECT: ADMINISTRATION - SHELL, INC.</p> <p>DATE: 12/28/2005</p> <p>PROJECT: OPERATIONS - SHELL, INC.</p> <p>DATE: 1/18/2006 11:25:14 AM</p> <p>PROJECT: OPERATIONS - SHELL, INC.</p> <p>DATE: 12/22/2005 8:25:32 AM</p> <p>PROJECT: OPERATIONS - SHELL, INC.</p> <p>DATE: 12/22/2005 8:25:32 AM</p> <p>PROJECT: OPERATIONS - SHELL, INC.</p> <p>DATE: 12/22/2005 8:25:32 AM</p> | | | | | | | | | |
| <p>BLACK & VEATCH Black & Veatch Corporation Chicago, Illinois</p> | | | | | | | | | |
| <p>CITY OF GENEVA, ILLINOIS WATER TREATMENT PLANT</p> <p>OPERATIONS BUILDING ARCHITECTURAL FILTER AREA FLOOR PLAN</p> | | | | | | | | | |
| <p>DESIGNED: MAJ</p> <p>DETAILED: DAY</p> <p>CHECKED: RRR/OUT</p> <p>APPROVED: RRR</p> <p>DATE: 1/10/06</p> | | | | | | | | | |
| <p>PROJECT NO. 137804</p> <p>A9 SHEET 28 OF 267</p> | | | | | | | | | |

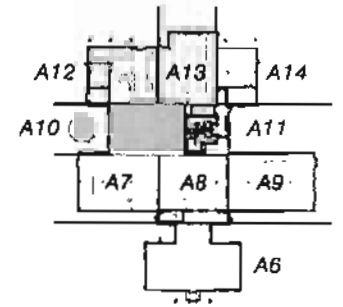
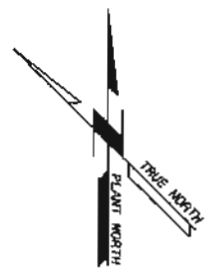
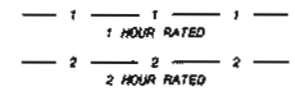


FOR CONTINUATION, SEE FLOOR PLAN SHEET A12

FOR CONTINUATION, SEE FLOOR PLAN SHEET A7

OPERATING FLOOR PLAN
1/4" = 1'-0"

FIREWALL LEGEND



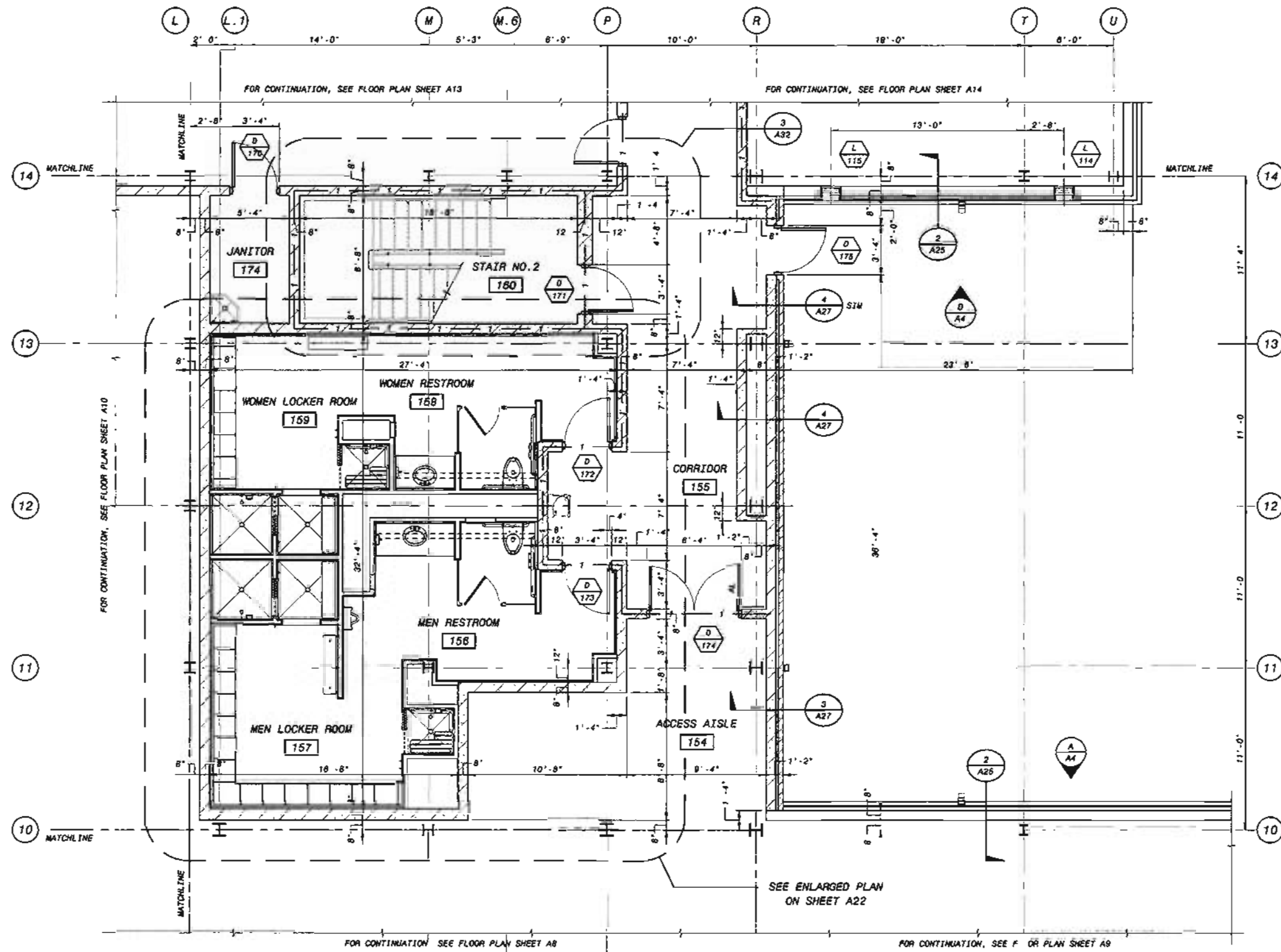
KEY PLAN
NO SCALE

| DATE | REVISIONS AND RECORD OF TISSUE | BY | CHK |
|------------|--|----|-----|
| 11/14/2000 | REVISED: ADMINISTRATION - SHEET | MS | CL |
| 11/14/2000 | REVISED: OPERATION - GENERAL SHEET | MS | CL |
| 11/14/2000 | REVISED: OPERATION - GENERAL 1ST FLOOR | MS | CL |
| 11/14/2000 | REVISED: OPERATION - PS GENERAL SHEET | MS | CL |
| 11/14/2000 | REVISED: OPERATION - EAST SHEET | MS | CL |

BLACK & VEATCH
Black & Veatch Corporation
Chicago, Illinois

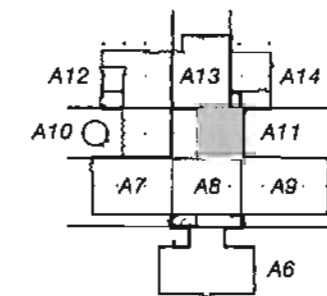
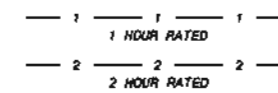
CITY OF GENEVA, ILLINOIS
WATER TREATMENT PLANT
OPERATIONS BUILDING
ARCHITECTURAL
CHEMICAL FEED / CIP AREA FLOOR PLAN

| |
|----------------------------------|
| DESIGNED: MAJ |
| DETAILED: DAY/LRL |
| CHECKED: RRR/DJT |
| APPROVED: RRR |
| DATE: 1/06/06 |
| PROJECT NO. 137804 |
| A10 SHEET 29 OF 287 |



OPERATING FLOOR PLAN
1/4" = 1'-0"

FIREWALL LEGEND



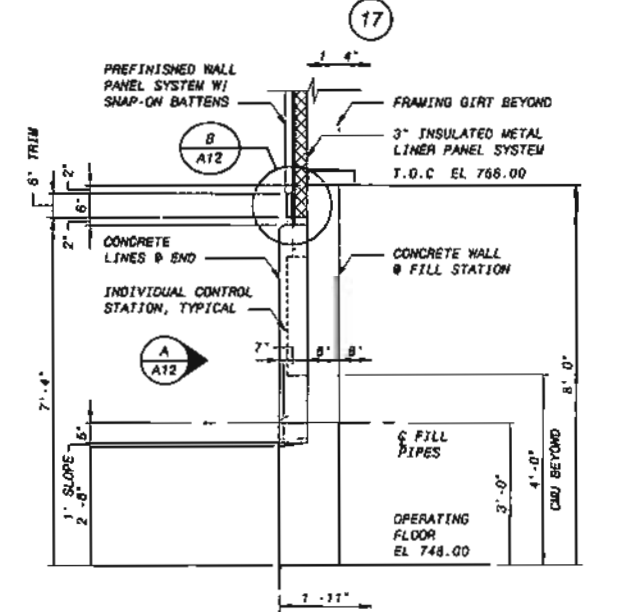
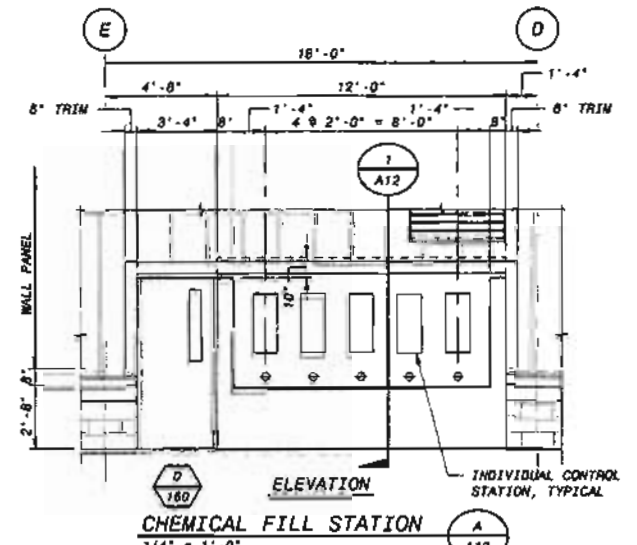
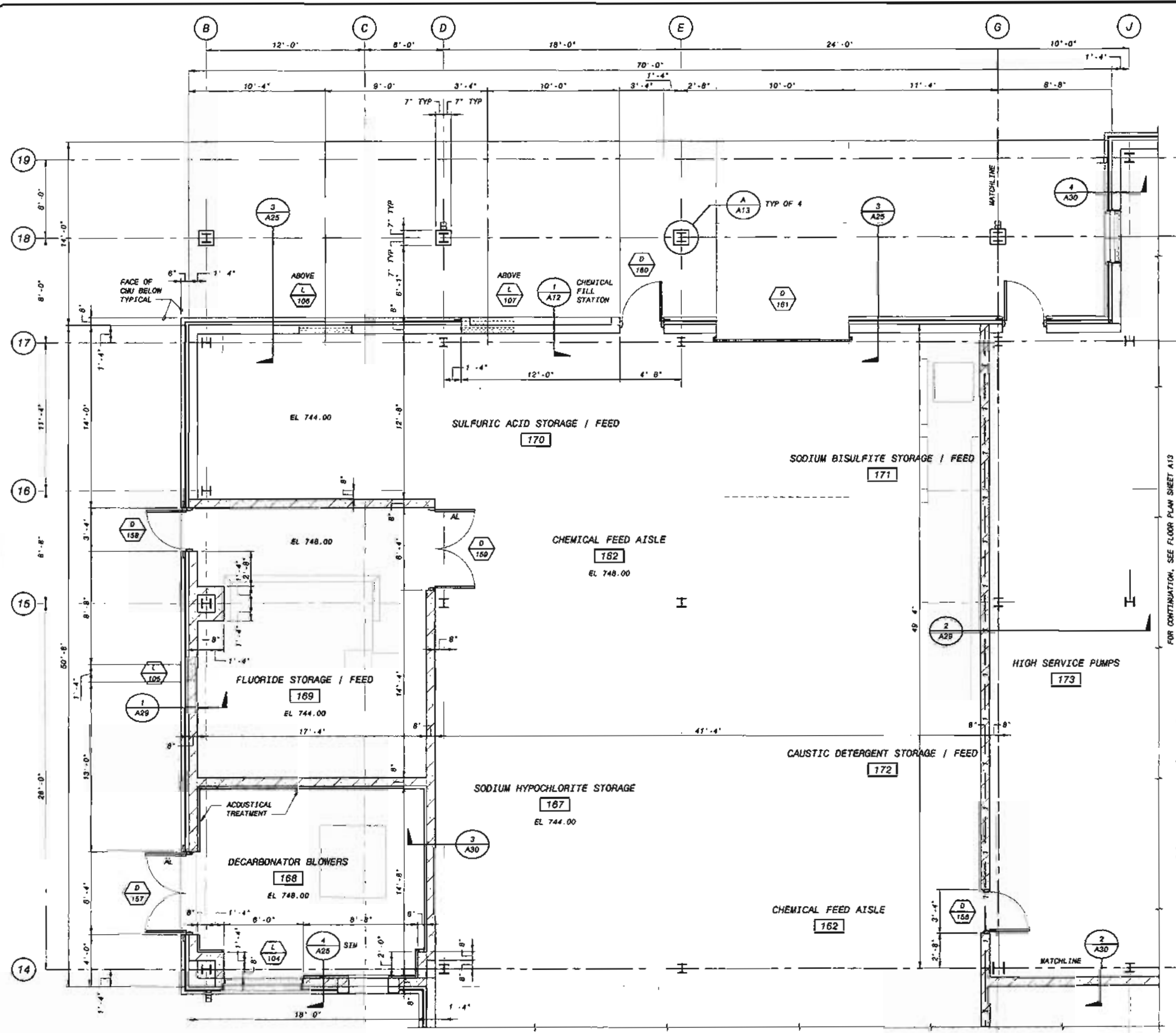
KEY PLAN
NO SCALE

| | | |
|--|-------------------------------|-------------|
| DATE: | REVISIONS AND RECORD OF ISSUE | NO. BY DATE |
| CYANET ID: 137804-300-023-A-1000000000 | PROJECT: OPERATIONS - SMALL | NO. BY DATE |
| NO. ACAD: 20001 | USER1: OPERATIONS - SMALL | NO. BY DATE |
| DATE: 10/11/2006 5:55:50 PM | USER2: OPERATIONS - SMALL | NO. BY DATE |
| PLOTTED: 10/11/2006 5:55:40 PM | USER3: OPERATIONS - SMALL | NO. BY DATE |
| USER: CYANET/AMT | USER4: OPERATIONS - SMALL | NO. BY DATE |
| | USER5: OPERATIONS - SMALL | NO. BY DATE |

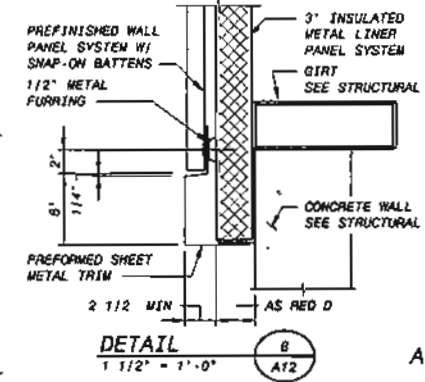
BLACK & VEATCH
Black & Veatch Corporation
Chicago, Illinois

CITY OF GENEVA, ILLINOIS
WATER TREATMENT PLANT
OPERATIONS BUILDING
ARCHITECTURAL
LOCKER ROOM AREA FLOOR PLAN

| |
|--------------------|
| DESIGNED: MAJ |
| DETAILED: DAY/LRL |
| CHECKED: RRR/LJY |
| APPROVED: PRR |
| DATE: 1/08/06 |
| PROJECT NO. 137804 |
| A11 |
| SHEET 30 OF 287 |



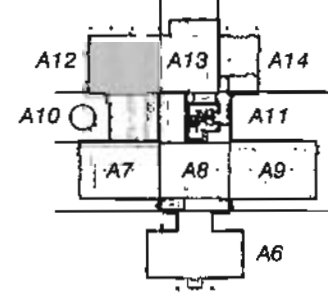
FOR CONTINUATION, SEE FLOOR PLAN SHEET A13



FIREWALL LEGEND

| | | |
|---|---|---|
| 1 | 1 | 1 |
| 2 | 2 | 2 |

1 HOUR RATED
2 HOUR RATED



KEY PLAN
NO SCALE

| DATE | REVISED AND REVISION | NO. | BY | CHK. | APP. |
|------------|------------------------------------|-----|----|------|------|
| 11/14/2008 | PROJECT ADMINISTRATION - SHEET LOG | | | | |
| 11/14/2008 | PROJECT ADMINISTRATION - SHEET LOG | | | | |
| 11/14/2008 | PROJECT ADMINISTRATION - SHEET LOG | | | | |
| 11/14/2008 | PROJECT ADMINISTRATION - SHEET LOG | | | | |
| 11/14/2008 | PROJECT ADMINISTRATION - SHEET LOG | | | | |
| 11/14/2008 | PROJECT ADMINISTRATION - SHEET LOG | | | | |

PROJECT ID: 137804-300-22-4-100000000
 W: 2008-2008
 SAVER: 11/14/2008 6:21:43 PM
 PLOTTED: 11/14/2008 6:31:01 PM
 USER: C:\BENTLEY\PLT

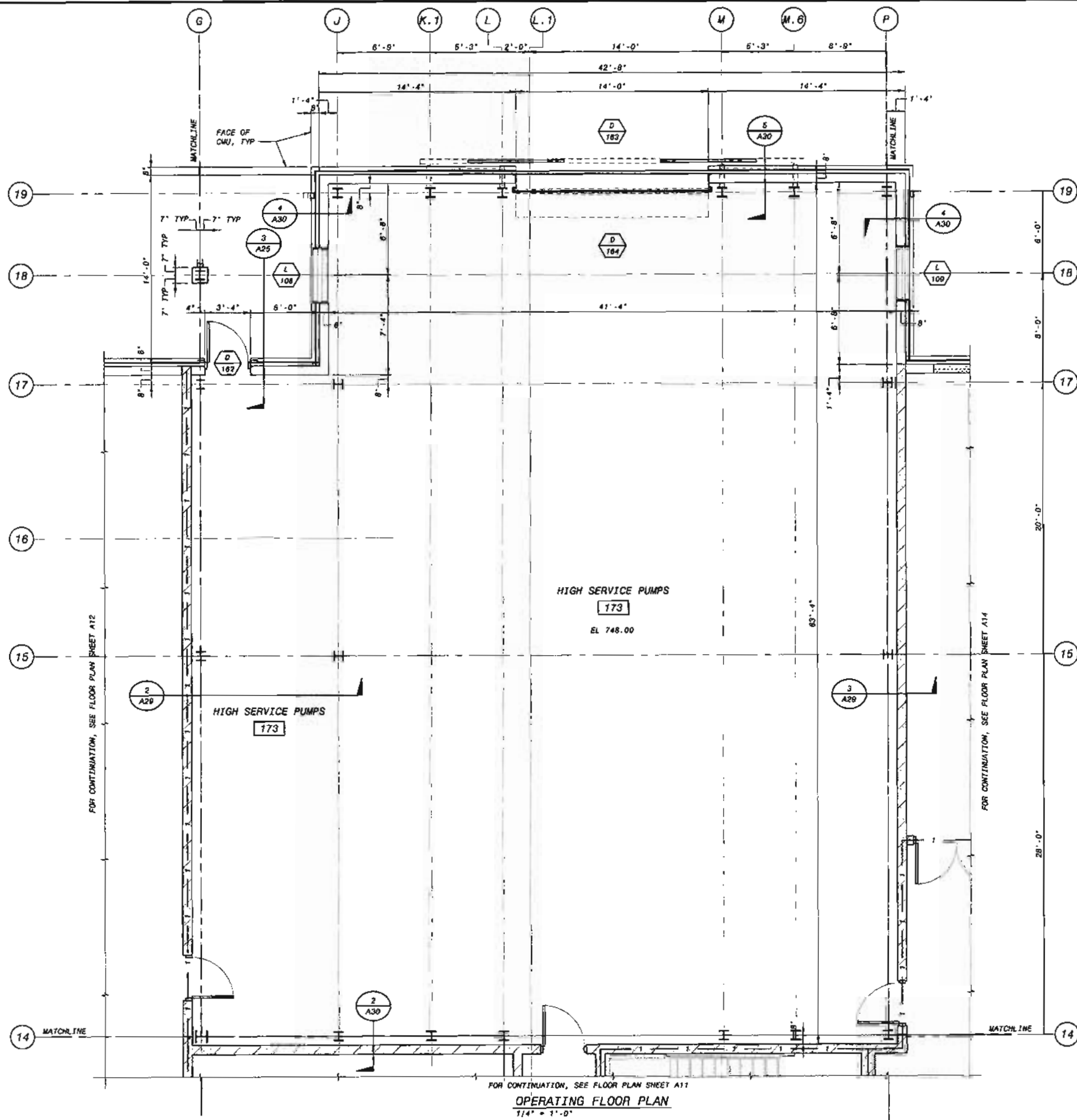
BLACK & VEATCH
 Black & Veatch Corporation
 Chicago, Illinois

CITY OF GENEVA, ILLINOIS
 WATER TREATMENT PLANT
 OPERATIONS BUILDING
 ARCHITECTURAL
 CHEMICAL FEED / STORAGE AREA

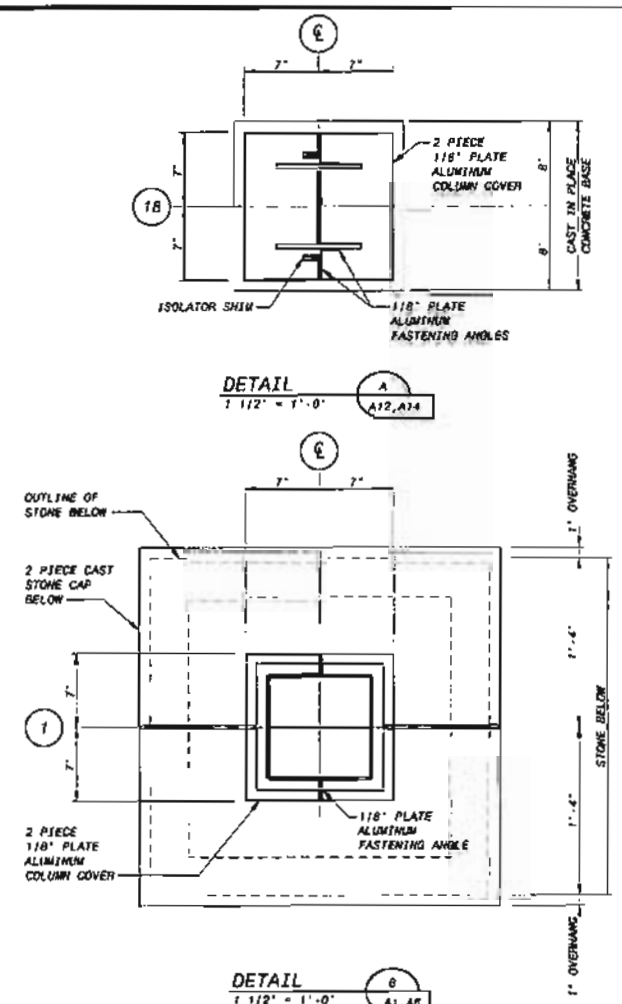
| |
|----------------------------------|
| DESIGNED: MAJ |
| DETAILED: DAY/VAL |
| CHECKED: BR/BJT |
| APPROVED: RRR |
| DATE: 11/08/08 |
| PROJECT NO. 137804 |
| A12 SHEET 31 OF 267 |

OPERATING FLOOR PLAN
1/4" = 1'-0"

FOR CONTINUATION, SEE FLOOR PLAN SHEET A10



FOR CONTINUATION, SEE FLOOR PLAN SHEET A11
OPERATING FLOOR PLAN
 1/4" = 1'-0"

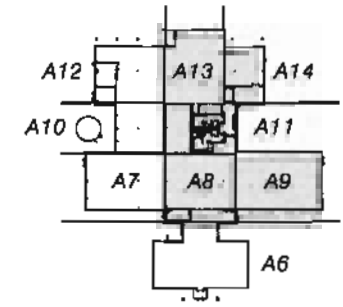


DETAIL A
 1 1/2" = 1'-0" (A12, A14)

DETAIL B
 1 1/2" = 1'-0" (A1, A8)

FIREWALL LEGEND

| | | |
|--------------|---|---|
| 1 | 1 | 1 |
| 1 HOUR RATED | | |
| 2 | 2 | 2 |
| 2 HOUR RATED | | |



KEY PLAN
 NO SCALE

| DATE | REVISIONS AND RECORD OF ISSUE |
|----------|--|
| 11/08/00 | 1. SHEET ADDED TO PROJECT - SEE SHEET A13 |
| 11/08/00 | 2. SHEET ADDED TO PROJECT - SEE SHEET A13 |
| 11/08/00 | 3. SHEET ADDED TO PROJECT - SEE SHEET A13 |
| 11/08/00 | 4. SHEET ADDED TO PROJECT - SEE SHEET A13 |
| 11/08/00 | 5. SHEET ADDED TO PROJECT - SEE SHEET A13 |
| 11/08/00 | 6. SHEET ADDED TO PROJECT - SEE SHEET A13 |
| 11/08/00 | 7. SHEET ADDED TO PROJECT - SEE SHEET A13 |
| 11/08/00 | 8. SHEET ADDED TO PROJECT - SEE SHEET A13 |
| 11/08/00 | 9. SHEET ADDED TO PROJECT - SEE SHEET A13 |
| 11/08/00 | 10. SHEET ADDED TO PROJECT - SEE SHEET A13 |
| 11/08/00 | 11. SHEET ADDED TO PROJECT - SEE SHEET A13 |
| 11/08/00 | 12. SHEET ADDED TO PROJECT - SEE SHEET A13 |
| 11/08/00 | 13. SHEET ADDED TO PROJECT - SEE SHEET A13 |
| 11/08/00 | 14. SHEET ADDED TO PROJECT - SEE SHEET A13 |
| 11/08/00 | 15. SHEET ADDED TO PROJECT - SEE SHEET A13 |
| 11/08/00 | 16. SHEET ADDED TO PROJECT - SEE SHEET A13 |
| 11/08/00 | 17. SHEET ADDED TO PROJECT - SEE SHEET A13 |
| 11/08/00 | 18. SHEET ADDED TO PROJECT - SEE SHEET A13 |
| 11/08/00 | 19. SHEET ADDED TO PROJECT - SEE SHEET A13 |
| 11/08/00 | 20. SHEET ADDED TO PROJECT - SEE SHEET A13 |
| 11/08/00 | 21. SHEET ADDED TO PROJECT - SEE SHEET A13 |
| 11/08/00 | 22. SHEET ADDED TO PROJECT - SEE SHEET A13 |
| 11/08/00 | 23. SHEET ADDED TO PROJECT - SEE SHEET A13 |
| 11/08/00 | 24. SHEET ADDED TO PROJECT - SEE SHEET A13 |
| 11/08/00 | 25. SHEET ADDED TO PROJECT - SEE SHEET A13 |
| 11/08/00 | 26. SHEET ADDED TO PROJECT - SEE SHEET A13 |
| 11/08/00 | 27. SHEET ADDED TO PROJECT - SEE SHEET A13 |
| 11/08/00 | 28. SHEET ADDED TO PROJECT - SEE SHEET A13 |
| 11/08/00 | 29. SHEET ADDED TO PROJECT - SEE SHEET A13 |
| 11/08/00 | 30. SHEET ADDED TO PROJECT - SEE SHEET A13 |
| 11/08/00 | 31. SHEET ADDED TO PROJECT - SEE SHEET A13 |
| 11/08/00 | 32. SHEET ADDED TO PROJECT - SEE SHEET A13 |

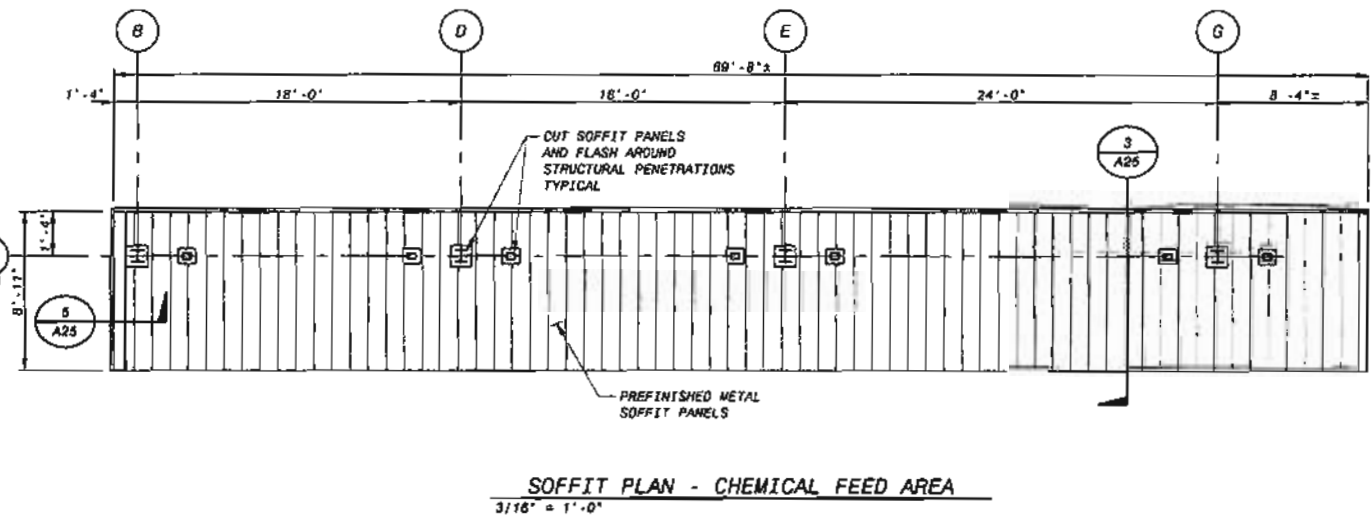
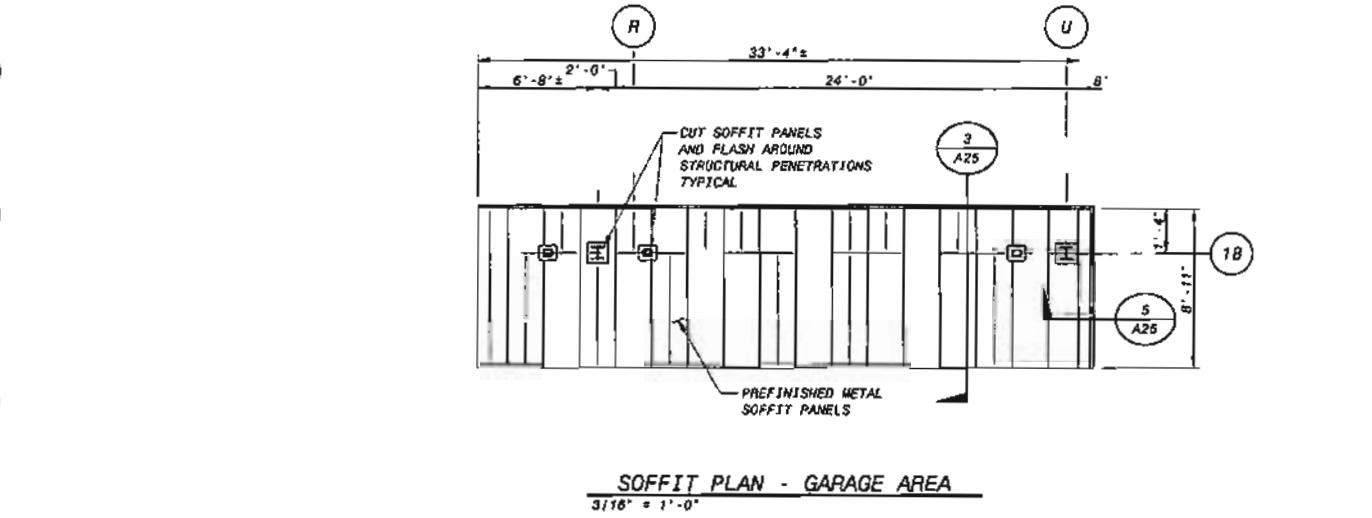
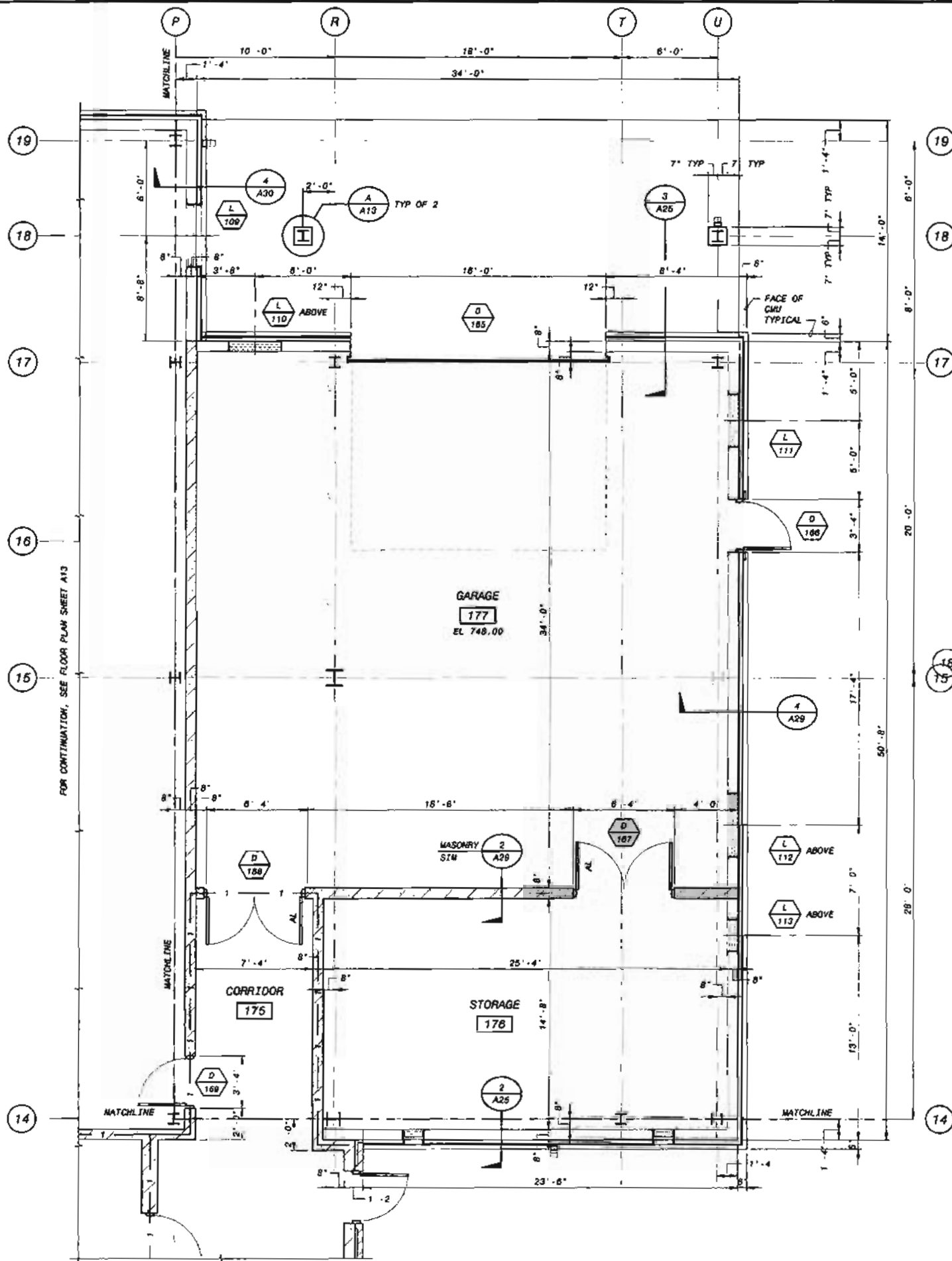
BLACK & VEATCH
 Black & Veatch Corporation
 Chicago, Illinois

CITY OF GENEVA, ILLINOIS
WATER TREATMENT PLANT
 OPERATIONS BUILDING
 ARCHITECTURAL
 HIGH SERVICE PUMP STATION AREA FLOOR PLAN

DESIGNED: MAJ
 DETAILED: DAY/LMK
 CHECKED: PRR/DJT
 APPROVED: RWR
 DATE: 11/08/00

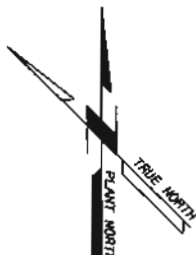
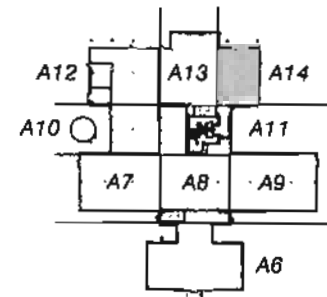
PROJECT NO.
 137804

A13
 SHEET
 32 OF 267



FIREWALL LEGEND

| | | |
|--------------|---|---|
| 1 | 1 | 1 |
| 1 HOUR RATED | | |
| 2 | 2 | 2 |
| 2 HOUR RATED | | |



CITY OF GENEVA, ILLINOIS
WATER TREATMENT PLANT
OPERATIONS BUILDING
ARCHITECTURAL
GARAGE AREA FLOOR PLAN

DESIGNED: MAY
DETAILED: DAY/EARL
CHECKED: RRR/OUT
APPROVED: RRR
DATE: 1/10/08

PROJECT NO.
137804

A14
SHEET
33 OF 267

BLACK & VEATCH
Black & Veatch Corporation
Chicago, Illinois

DATE: 1/10/08
REVISED AND RECORD OF ISSUE NO. BY DATE
PREP: Administration - Sheet 12.dwg
CHECK: Operation - General Sheet 12.dwg
SAVED: YEA/1/10/08 11:30:58 AM
PLOT: 1/10/08 11:41:37 AM
USER: LYON/DAVE
DWS: 1/10/08 11:30:58 AM
DWF: 1/10/08 11:30:58 AM

