

WELCOME TO
CONNECT



**Creating Business Analytics Reports
With UM Data**



Harsha Thota

Implementation Consultant

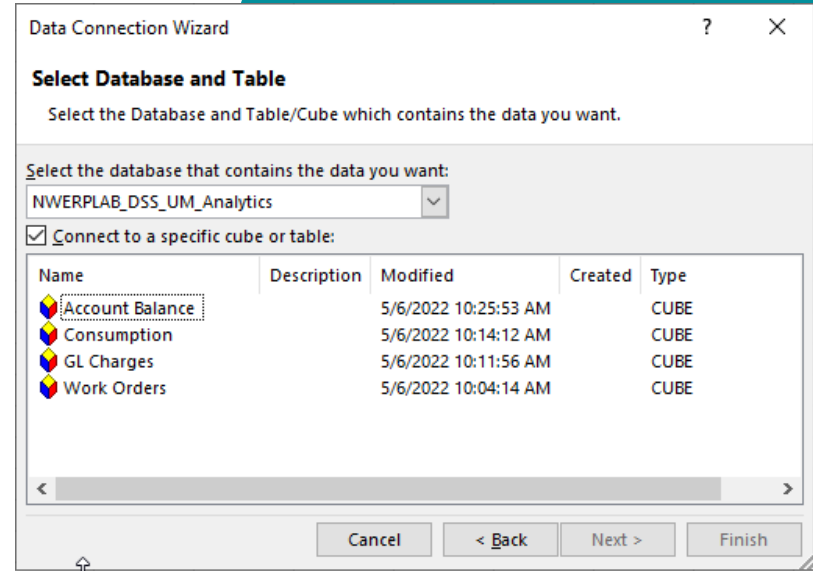
Agenda

- Intro to UM Cubes for Business Analytics
- Demo/Lab
- Q&A

UM Cubes for Business Analytics

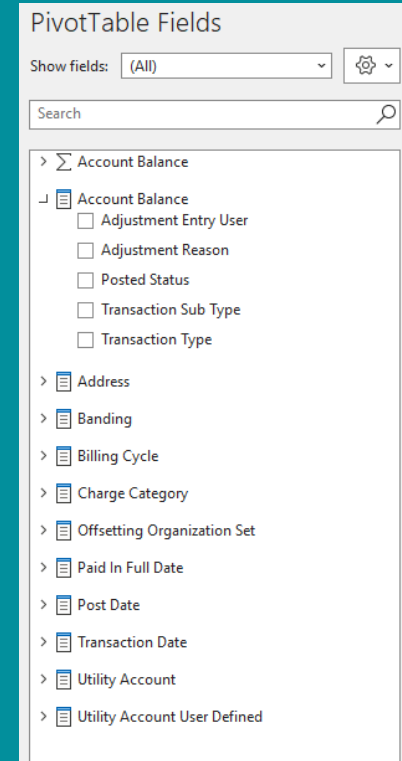
Cubes

- There are 4 total cubes for UM



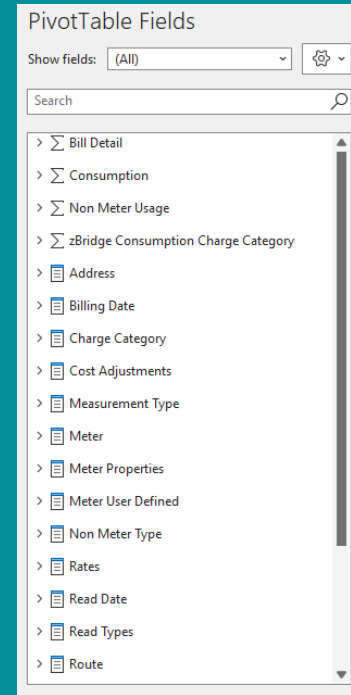
Account Balance Cube

- Has Account Balance and Aging information
- Also includes Charge Category, Billing and Transaction information



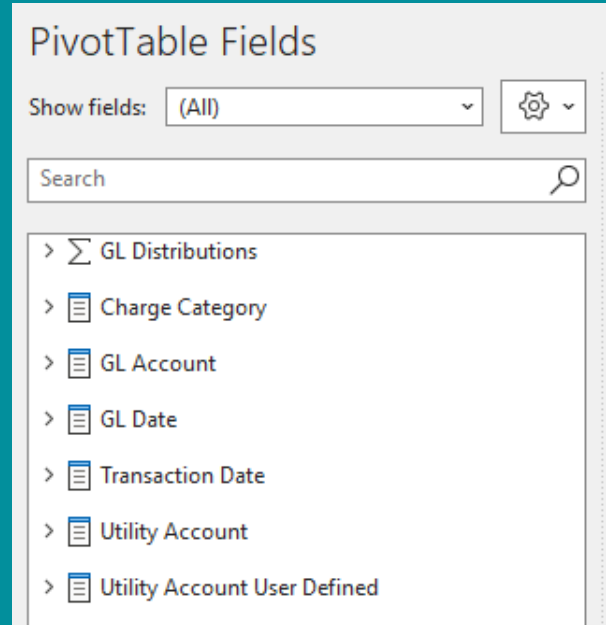
Consumption Cube

- Has consumption information for both Meters and Non-Metered Units
- Also has information for Meters, Non-Metered Units, Services, Rates, etc.



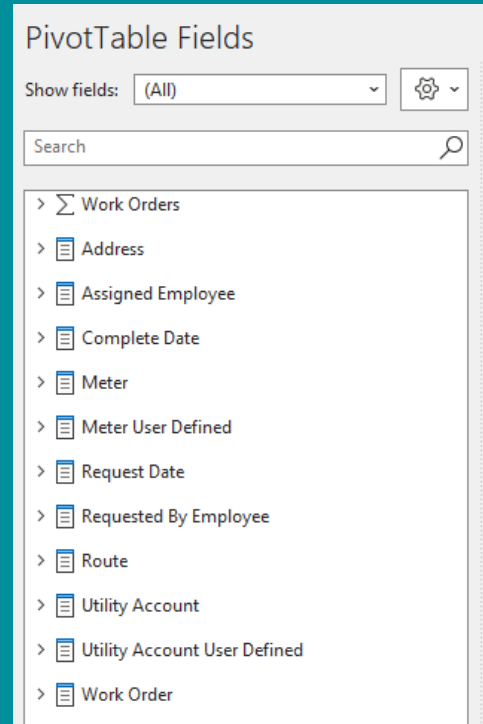
GL Charges Cube

- GL information for charges/transactions in UM



Work Orders Cube

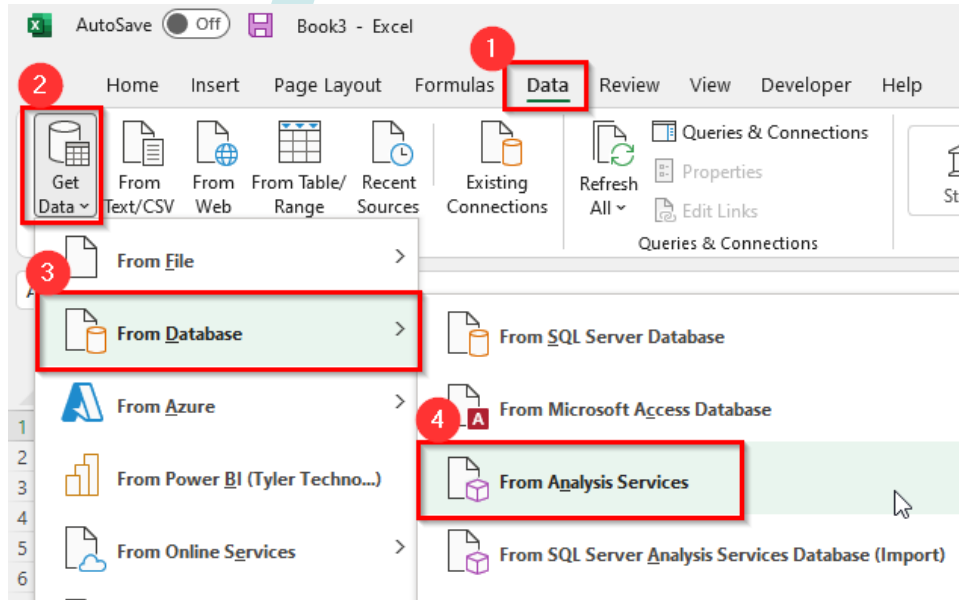
- All information regarding Work Orders



A close-up photograph of a person's hand with light-colored nail polish clicking a black computer mouse. The background is a blurred office environment with a computer monitor and a window showing green foliage. A teal banner is overlaid across the middle of the image.

Using Business Analytics

Connect to Business Analytics



Connect to Business Analytics

Data Connection Wizard ? X

Connect to Database Server

Enter the information required to connect to the database server.

1 . Server name: 3,214.108.135

2 . Log on credentials

Use Windows Authentication

Use the following User Name and Password

User Name: .\dssconnect

Password: ●●●●●●●●

3

Cancel < Back Next > Finish

Connection Information

Data > Get Data > From Other Source > From Analysis Services

Server Name: 3.214.108.135

User Name: .\dssconnect

Password: Connect123!

Connect to Business Analytics

Data Connection Wizard

Select Database and Table

Select the Database and Table/Cube which contains the data you want.

Select the database that contains the data you want:

NWERPLAB_DSS_UM_Analytics 1

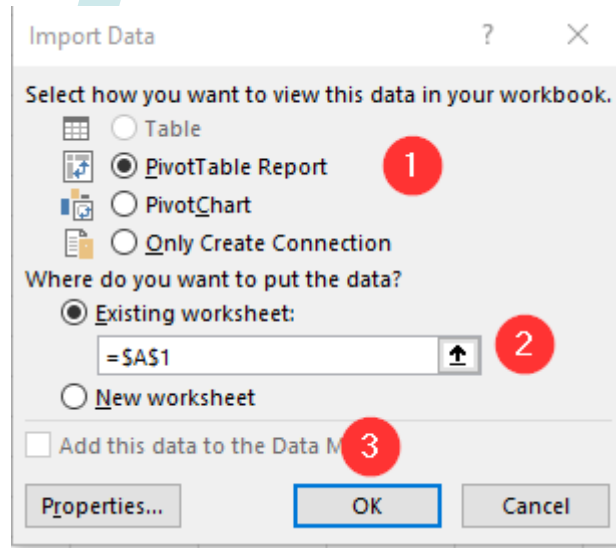
Connect to a specific cube or table:

Name	Description	Modified	Created	Type
Account Balance		5/6/2022 10:25:53 AM		CUBE
Consumption 2		5/6/2022 10:14:12 AM		CUBE
GL Charges		5/6/2022 10:11:56 AM		CUBE
Work Orders		5/6/2022 10:04:14 AM		CUBE

3

Cancel < Back Next > Finish

Connect to Business Analytics




Connect to Business Analytics

	A	B	C	D	E	F	G
1							
2							
3							
4							
5							
6							
7							
8							
9							
10							
11							
12							
13							
14							
15							
16							
17							
18							
19							

PivotTable3

To build a report, choose fields from the PivotTable Field List



PivotTable Fields

Show fields: (All) [Settings]

Drag fields between areas below:

Search

- > Bill Detail
- > Consumption
- > Non Meter Usage
- > zBridge Consumption Charge Category
- > Address
- > Billing Date
- > Charge Category
- > Cost Adjustments
- > Measurement Type
- > Meter
- > Meter Properties
- > Meter User Defined
- > Non Meter Type
- > Rates
- > Read Date
- > Read Types
- > Route

Filters

Columns

Rows

Values

Defer Layout Update [Update]

Demo



Your feedback is important

Please complete the session survey via the mobile app

We read every submission

We use your input to guide content for future sessions and to improve our presentations



24
CONNECT