



# Pipe Master Data

## **Location**

<b>Drainage Area</b>	<b>Street</b>	SIMPSON
<b>Pipe Segment Ref.</b> 3VM43-4VM06	<b>City</b>	GENEVA
<b>Location Code</b>		
<b>Location Details</b>		

## **Pipe**

<b>Pipe Use</b>	Sanitary Sewage Pipe
<b>Height (Diameter)</b>	8 in
<b>Width</b>	
<b>Shape</b>	Circular
<b>Material</b>	Vitrified Clay Pipe
<b>Lining Method</b>	None
<b>Coating Method</b>	
<b>Pipe Joint Length</b>	
<b>Total Length</b>	134.940 ft
<b>Year constructed</b>	
<b>Year Renewed</b>	

## **Manholes**

### *upstream*

### *Downstream*

<b>Number</b>	<b>3VM43</b>	<b>4VM06</b>
<b>Rim to Invert</b>		
<b>Rim to Grade</b>		
<b>Grade to Invert</b>		
<b>Northing</b>		
<b>Easting</b>		
<b>Elevation</b>		
<b>Coordinate System</b>		
<b>Vertical Datum</b>		
<b>GPS Accuracy</b>		

# PACP Inspection Report

## General information

Project	P/O Number	Reviewed by
Owner	Work Order No.	Certificate No.
Customer		
Purpose of Survey		
COF		
Pressure Value		
Surveyed by	39	Date 3/5/2025
Certificate No.	123456	Time 13:20
Inspection Status	Complete Inspection	Weather
Inspection Tech.		Pre-cleaning No Pre-Cleaning
		Date Cleaned
		Flow Control
Direction of Survey	Downstream	

## Location

Drainage Area	Street	SIMPSON
Pipe Segment Ref. 3VM43-4VM06	City	GENEVA
Location Code		
Location Details		

Pipe	Manholes	upstream	Downstream
Pipe Use	Number	3VM43	4VM06
Height (Diameter)	Rim to Invert		
Width	Rim to Grade		
Shape	Grade to Invert		
Material	Northing		
Lining Method	Easting		
Coating Method	Elevation		
Pipe Joint Length	Coordinate System		
Total Length	Vertical Datum		
Length Surveyed	GPS Accuracy		
Year constructed			
Year Renewed			

Distance	Video Ref.	Code	Description	Cont. Defect	Value			Grade	Joint	Circumferential Location		Image	Remarks
					Dimension		%			From	To		
					1st	2nd							
0.00	00:00:00	AMH	Access Point Manhole								001	START MH 3VM43	
0.00	00:00:03	MWL	Miscellaneous Water Level			0					002		
37.95	00:01:39	RFJ	Roots Fine Joint					J	09	04	003		
47.90	00:02:03	RFJ	Roots Fine Joint					J	10	02	004	INFILTRATION	
64.33	00:02:38	TF	Tap Factory		6				09		005	MEDIUM ROOTS IN LATERAL	
65.15	00:02:54	RFJ	Roots Fine Joint					J	08	10	006		
80.93	00:03:28	TF	Tap Factory		6				03		007		
134.94	00:05:13	AMH	Access Point Manhole								008	END MH 4VM06	

Quick Rating			Overall Rating (OR)		Rating Index (RI)		Segment Grade				
QSR	QMR	QOR	Structural	O&M	Structural	O&M	1	2	3	4	5
							Structural O&M				

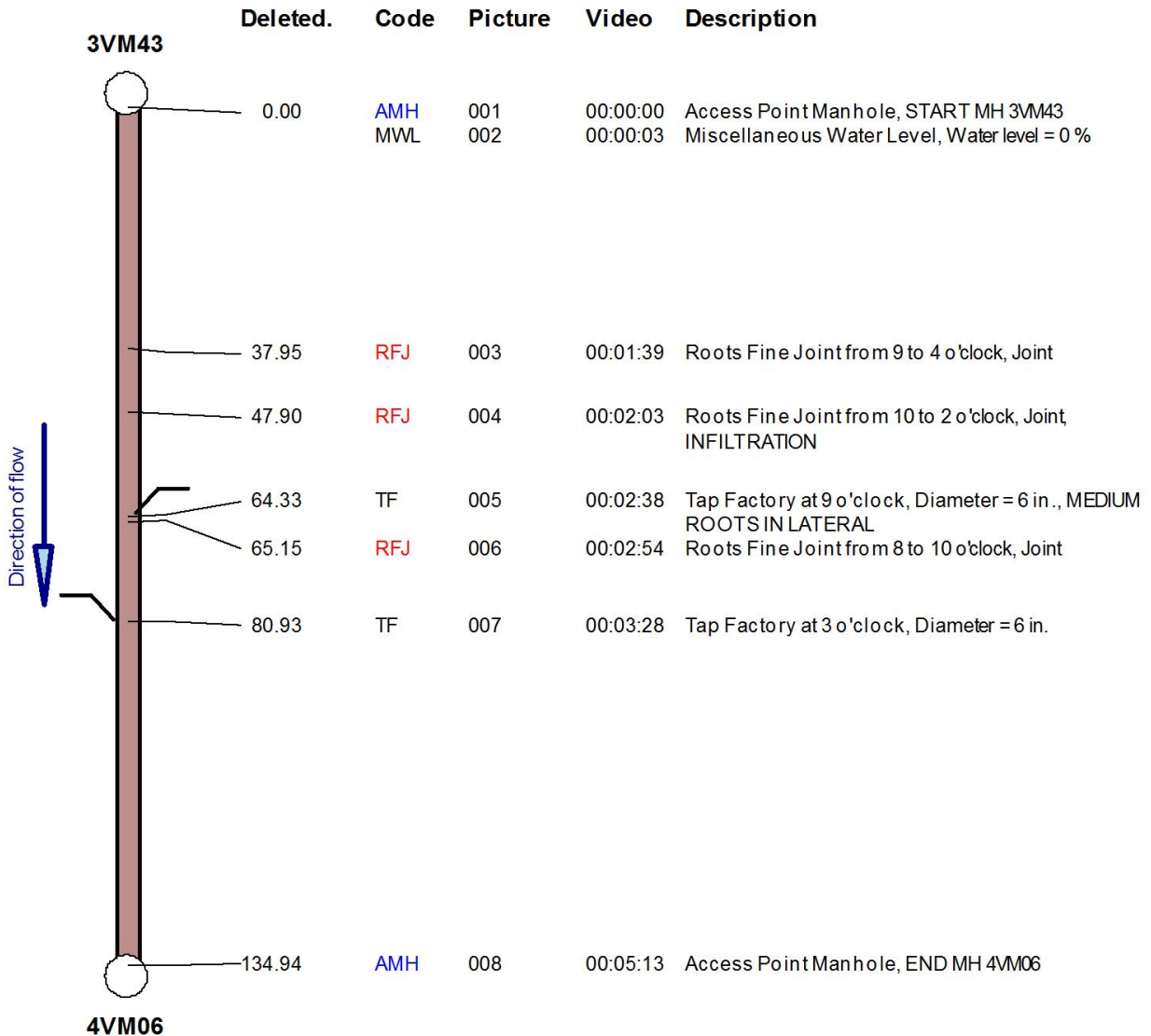
# Pipe Segment Graphics

General information	Location
<b>Project</b> <b>Owner</b> <b>Surveyed by</b> 39 <b>Date</b> 3/5/2025 <b>Time</b> 13:20 <b>Direction of Survey</b> Downstream	<b>Drainage Area</b> <b>Pipe Segment Ref.</b> 3VM43-4VM06 <b>Location Code</b> <b>Street</b> SIMPSON <b>City</b> GENEVA

Pipe			
<b>Pipe Use</b>	Sanitary Sewage Pipe	<b>Total Length</b>	134.940 ft
<b>Dimension [in]</b>	8	<b>Length Surveyed</b>	134.940 ft
<b>Shape</b>	Circular	<b>Upstream MH</b>	3VM43
<b>Material</b>	Vitrified Clay Pipe	<b>Downstream MH</b>	4VM06

Quick Rating			Overall Rating (OR)		Rating Index (RI)		Segment Grade					
QSR	QMR	QOR	Structural	O&M	Structural	O&M	1	2	3	4	5	

**Drawing direction:** In inspection direction



# Pipe Segment Images

<b>Surveyed by</b> 39	<b>Date</b> 3/5/2025	<b>Pipe Segment Ref.</b> 3VM43-4VM06
<b>Owner</b>		<b>Upstream Manhole</b> 3VM43
<b>Pipe Use</b> Sanitary Sewage Pipe		<b>Downstream Manhole</b> 4VM06
<b>Dimension [in]</b> 8		

Access Point Manhole, START MH  
3VM43

Name: 3VM43-4VM06  
Access Point Manhole, START MH 3VM43



**Image Ref.** 001

**Video** 00:00:00  
**Dist. downstream** 0.00 ft  
**Code** AMH  
**C. Location**



Miscellaneous Water Level, Water  
level = 0 %

Name: 3VM43-4VM06  
Miscellaneous Water Level, Water level = 0 %



**Image Ref.** 002

**Video** 00:00:03  
**Dist. downstream** 0.00 ft  
**Code** MWL  
**C. Location**



# Pipe Segment Images

Surveyed by	39	Date	3/5/2025	Pipe Segment Ref.	3VM43-4VM06
Owner				Upstream Manhole	3VM43
Pipe Use	Sanitary Sewage Pipe			Downstream Manhole	4VM06
Dimension [in]	8				

Roots Fine Joint from 9 to 4 o'clock, Joint



**Image Ref.** 003

Video 00:01:39  
Dist. downstream 37.95 ft  
Code **RFJ**  
C. Location 09 - 04

Joint

Roots Fine Joint from 10 to 2 o'clock, Joint, INFILTRATION



**Image Ref.** 004

Video 00:02:03  
Dist. downstream 47.90 ft  
Code **RFJ**  
C. Location 10 - 02

Joint

# Pipe Segment Images

<b>Surveyed by</b>	39	<b>Date</b>	3/5/2025	<b>Pipe Segment Ref.</b>	3VM43-4VM06
<b>Owner</b>				<b>Upstream Manhole</b>	3VM43
<b>Pipe Use</b>	Sanitary Sewage Pipe			<b>Downstream Manhole</b>	4VM06
<b>Dimension [in]</b>	8				

Tap Factory at 9 o'clock, Diameter = 6 in., MEDIUM ROOTS IN LATERAL



**Image Ref.** 005

**Video** 00:02:38  
**Dist. downstream** 64.33 ft  
**Code** TF  
**C. Location** 09

Roots Fine Joint from 8 to 10 o'clock, Joint



**Image Ref.** 006

**Video** 00:02:54  
**Dist. downstream** 65.15 ft  
**Code** RFJ  
**C. Location** 08 - 10

[Joint](#)

# Pipe Segment Images

Surveyed by	39	Date	3/5/2025	Pipe Segment Ref.	3VM43-4VM06
Owner				Upstream Manhole	3VM43
Pipe Use	Sanitary Sewage Pipe			Downstream Manhole	4VM06
Dimension [in]	8				

Tap Factory at 3 o'clock, Diameter = 6 in.



**Image Ref.** 007

Video 00:03:28  
 Dist. downstream 80.93 ft  
 Code TF  
 C. Location 03

Access Point Manhole, END MH 4VM06



**Image Ref.** 008

Video 00:05:13  
 Dist. downstream 134.94 ft  
 Code AMH  
 C. Location