

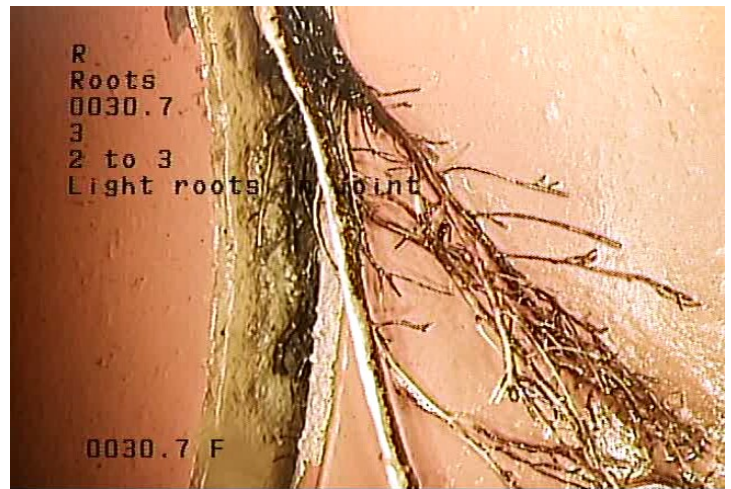
Owner	Customer	Upstream MH	Downstream MH	Date	Time
		4NM17	4NM22	08-13-2018	12:23 PM
Surveyor	Street		City	Weather	
john	South		GENEVA	Dry	
Size	Material	Sewer Use	Purpose		Length
8	Vitrified Clay Pipe		Routine Assessment		
Comments				Pre-Cleaning	TV Length
root cut				Jetting	345.2

Fig.	Code	Description	Position	Severity	Comment
30.7	R	Roots	2 to 3	3	Light roots in joint
42.9	L	Lateral	2		Heavy Roots in service
56.2	L	Lateral	9		
74.6	R	Roots	12 to 12	3	light roots in joint
75.8	PR	Point Repair		3	Start of point repair
80.8	PR	Point Repair		3	end of point repair
86.2	R	Roots	12 to 8	3	Roots in joint
90.6	R	Roots	12 to 7	3	Roots in joint
97.0	R	Roots	12 to 7	3	Roots in joint
100.9	R	Roots	9 to 4	3	roots in joint
118.5	R	Roots	9 to 4	3	Roots in joint
123.3	R	Roots	10 to 4	3	Roots in joint
134.6	JO	Joint Offset		2	
138.9	PR	Point Repair	12 to 3	3	Hole in pipe with main break sleeve repair
161.5	L	Lateral	9		
206.8	L	Lateral	1		
257.5	L	Lateral	1		
278.7	L	Lateral	9		Stub
291.7	L	Lateral	9		
345.2	MH	Manhole			End manhole

Owner	Customer	Upstream MH	Downstream MH	Date	Time
		4NM17	4NM22	08-13-2018	12:23 PM
Surveyor	Street		City	Weather	
john	South		GENEVA	Dry	
Size	Material	Sewer Use	Purpose	Length	
8	Vitrified Clay Pipe		Routine Assessment		
Comments				Pre-Cleaning	TV Length
root cut				Jetting	345.2



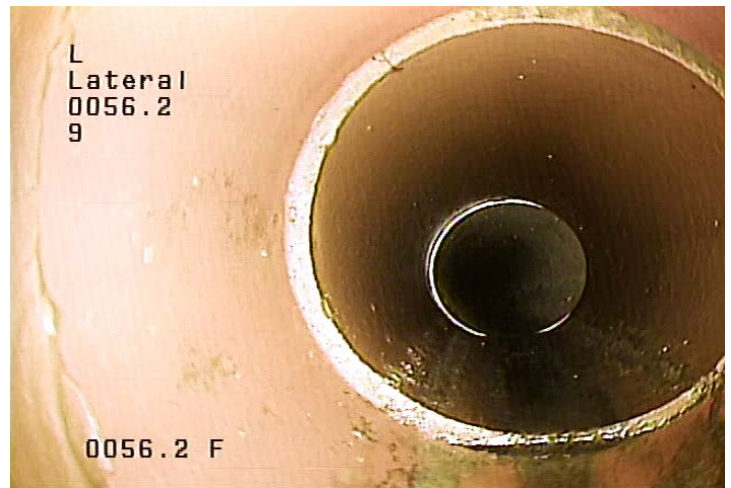
R - Roots @ 30.7 ft. Light roots in joint



L - Lateral @ 42.9 ft. Heavy Roots in service

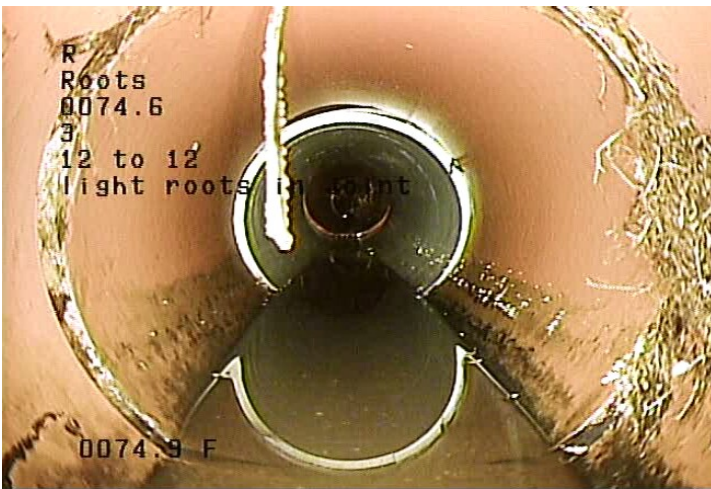


L - Lateral @ 56.2 ft.

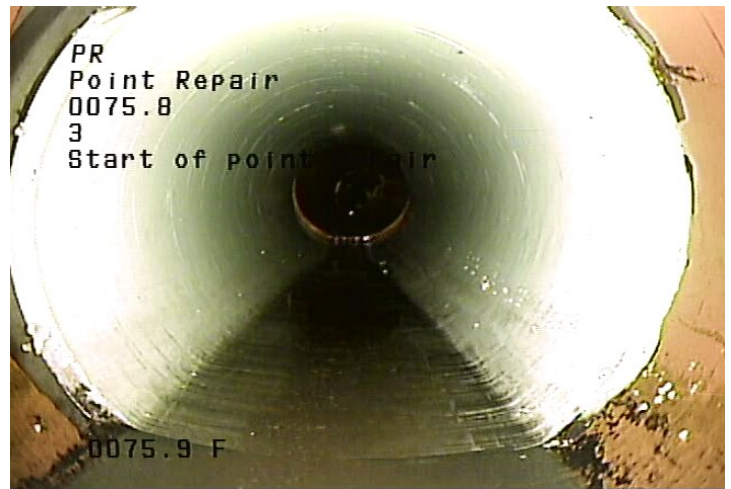


R - Roots @ 74.6 ft. light roots in joint

Owner	Customer	Upstream MH	Downstream MH	Date	Time
		4NM17	4NM22	08-13-2018	12:23 PM
Surveyor	Street		City	Weather	
john	South		GENEVA	Dry	
Size	Material	Sewer Use	Purpose	Length	
8	Vitrified Clay Pipe		Routine Assessment		
Comments				Pre-Cleaning	TV Length
root cut				Jetting	345.2



PR - Point Repair @ 75.8 ft. Start of point repair



PR - Point Repair @ 80.8 ft. end of point repair

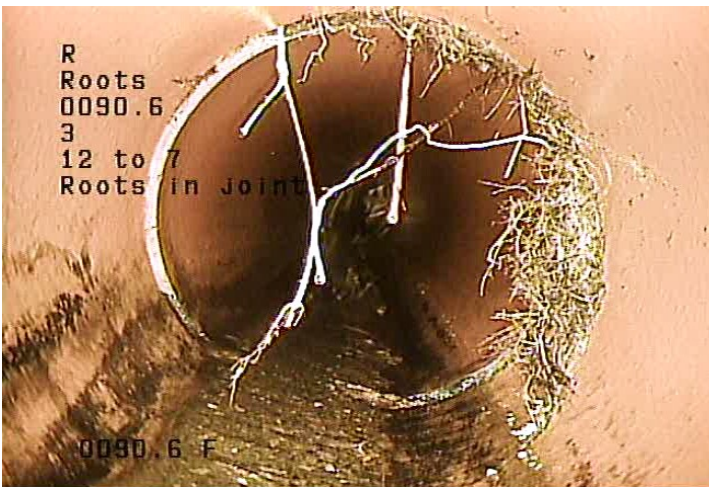


R - Roots @ 86.2 ft. Roots in joint

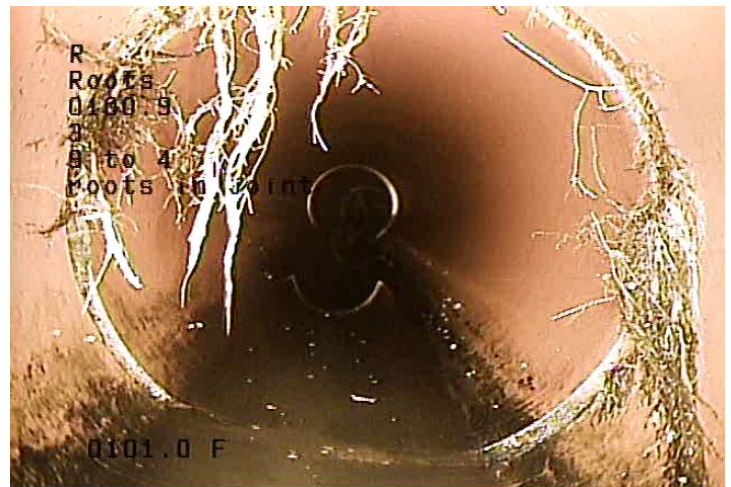


R - Roots @ 90.6 ft. Roots in joint

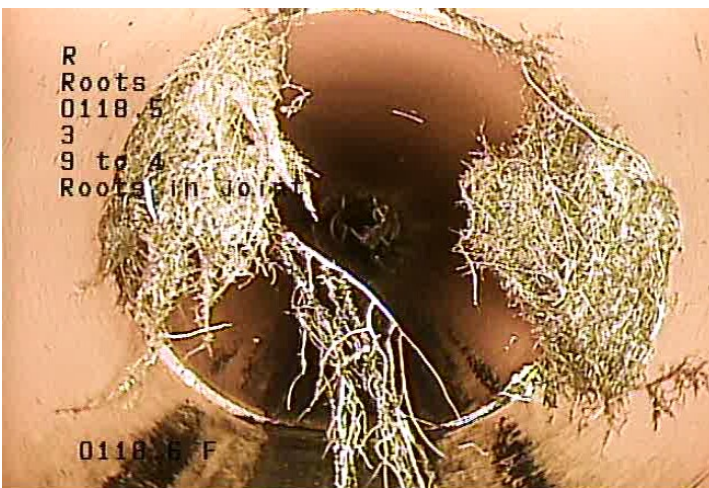
Owner	Customer	Upstream MH	Downstream MH	Date	Time
		4NM17	4NM22	08-13-2018	12:23 PM
Surveyor	Street	City		Weather	
john	South	GENEVA		Dry	
Size	Material	Sewer Use	Purpose	Length	
8	Vitrified Clay Pipe		Routine Assessment		
Comments				Pre-Cleaning	TV Length
root cut				Jetting	345.2



R - Roots @ 97.0 ft. Roots in joint



R - Roots @ 100.9 ft. roots in joint



R - Roots @ 118.5 ft. Roots in joint



R - Roots @ 123.3 ft. Roots in joint

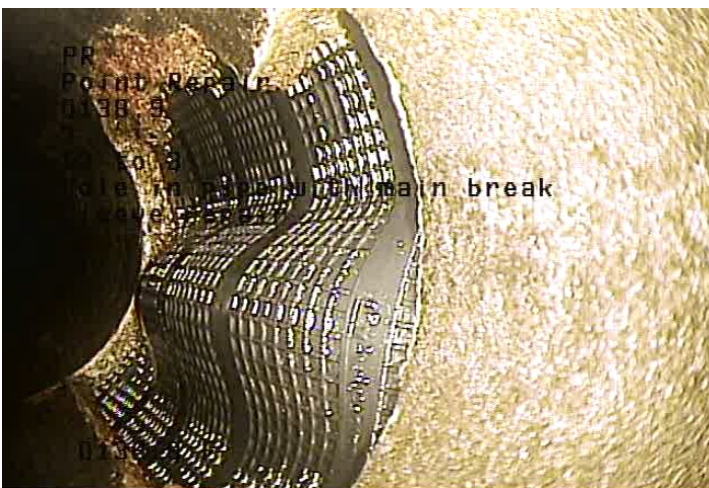
Owner	Customer	Upstream MH	Downstream MH	Date	Time
		4NM17	4NM22	08-13-2018	12:23 PM
Surveyor	Street		City	Weather	
john	South		GENEVA	Dry	
Size	Material	Sewer Use	Purpose		Length
8	Vitrified Clay Pipe		Routine Assessment		
Comments				Pre-Cleaning	TV Length
root cut				Jetting	345.2



JO - Joint Offset @ 134.6 ft.



PR - Point Repair @ 138.9 ft. Hole in pipe with main break sleeve repair



L - Lateral @ 161.5 ft.

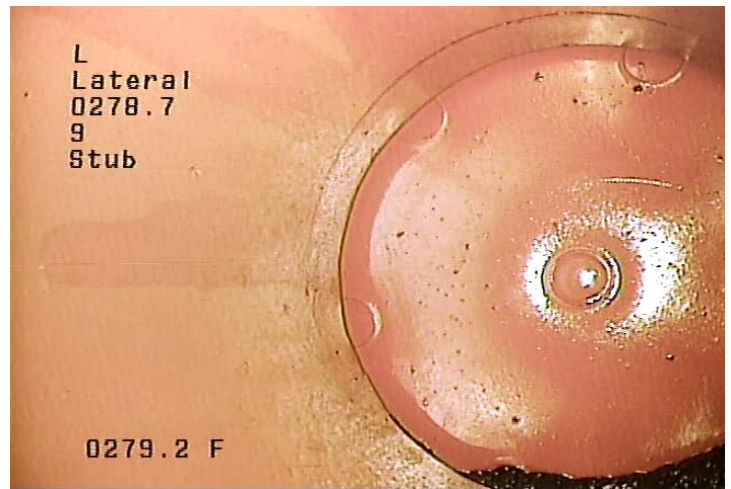


L - Lateral @ 206.8 ft.

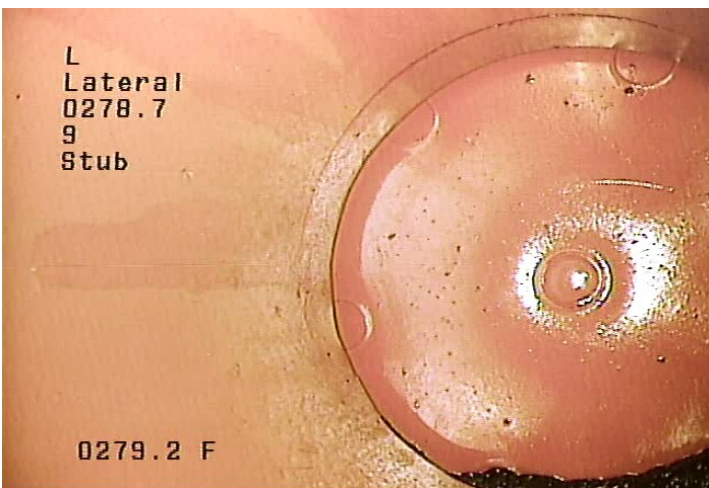
Owner	Customer	Upstream MH	Downstream MH	Date	Time
		4NM17	4NM22	08-13-2018	12:23 PM
Surveyor	Street		City	Weather	
john	South		GENEVA	Dry	
Size	Material	Sewer Use	Purpose	Length	
8	Vitrified Clay Pipe		Routine Assessment		
Comments				Pre-Cleaning	TV Length
root cut				Jetting	345.2



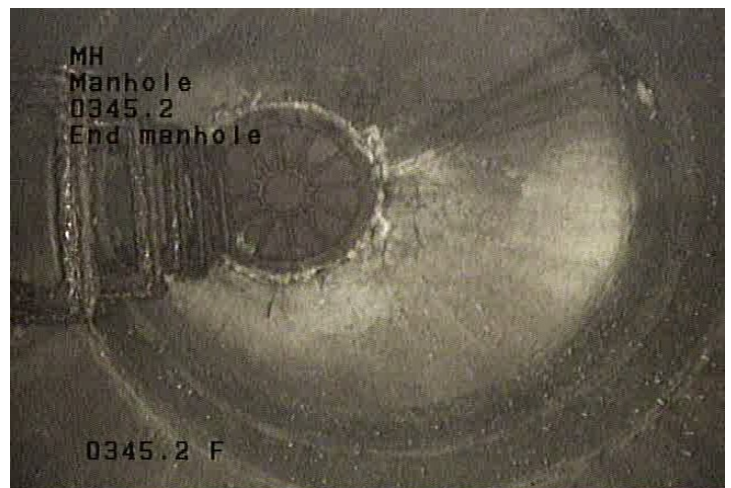
L - Lateral @ 257.5 ft.



L - Lateral @ 278.7 ft. Stub



L - Lateral @ 291.7 ft.



MH - Manhole @ 345.2 ft. End manhole

Owner	Customer	Upstream MH	Downstream MH	Date	Time
		4NM17	4NM22	08-13-2018	12:23 PM
Surveyor	Street	City		Weather	
john	South	GENEVA		Dry	
Size	Material	Sewer Use	Purpose	Length	
8	Vitrified Clay Pipe		Routine Assessment		
Comments	Pre-Cleaning	TV Length			
root cut	Jetting	345.2			

Ftg.	Code	Description	Position	Severity	Comment
30.7	R	Roots	2 to 3	3	Light roots in joint
42.9	L	Lateral	2		Heavy Roots in service
56.2	L	Lateral	9		
74.6	R	Roots	12 to 12	3	light roots in joint
75.8	PR	Point Repair		3	Start of point repair
80.8	PR	Point Repair		3	end of point repair
86.2	R	Roots	12 to 8	3	Roots in joint
90.6	R	Roots	12 to 7	3	Roots in joint
97.0	R	Roots	12 to 7	3	Roots in joint
100.9	R	Roots	9 to 4	3	roots in joint
118.5	R	Roots	9 to 4	3	Roots in joint
123.3	R	Roots	10 to 4	3	Roots in joint
134.6	JO	Joint Offset		2	
138.9	PR	Point Repair	12 to 3	3	Hole in pipe with main break sleeve repair
161.5	L	Lateral	9		
206.8	L	Lateral	1		
257.5	L	Lateral	1		
278.7	L	Lateral	9		Stub
291.7	L	Lateral	9		
345.2	MH	Manhole			End manhole

Owner	Customer	Upstream MH 4NM17	Downstream MH 4NM22	Date 08-13-2018	Time 12:23 PM
Surveyor john	Street South	City GENEVA		Weather Dry	
Size 8	Material Vitrified Clay Pipe	Sewer Use	Purpose Routine Assessment	Length	
Comments root cut				Pre-Cleaning Jetting	TV Length 345.2



Owner	Customer	Upstream MH	Downstream MH	Date	Time
		4NM17	4NM22	08-13-2018	12:23 PM
Surveyor	Street		City	Weather	
john	South		GENEVA	Dry	
Size	Material	Sewer Use	Purpose	Length	
8	Vitrified Clay Pipe		Routine Assessment		
Comments				Pre-Cleaning	TV Length
root cut				Jetting	345.2

Distance (ft)

